



# Introduction to Localscapes®

---

Learn the 5-step Localscapes method to create a yard that works for you and thrives in Utah













# What you will learn



- The 5 steps of the Localscapes process—created especially for Utah
- Common design errors that cause our landscapes to fail
- How the layout of the landscape directly affects function, maintenance and irrigation efficiency





# What you won't learn

- How to create a landscape design
- What specific plants to grow in your yard
- How to modify your personal irrigation system
- Details needed to create a Localscape





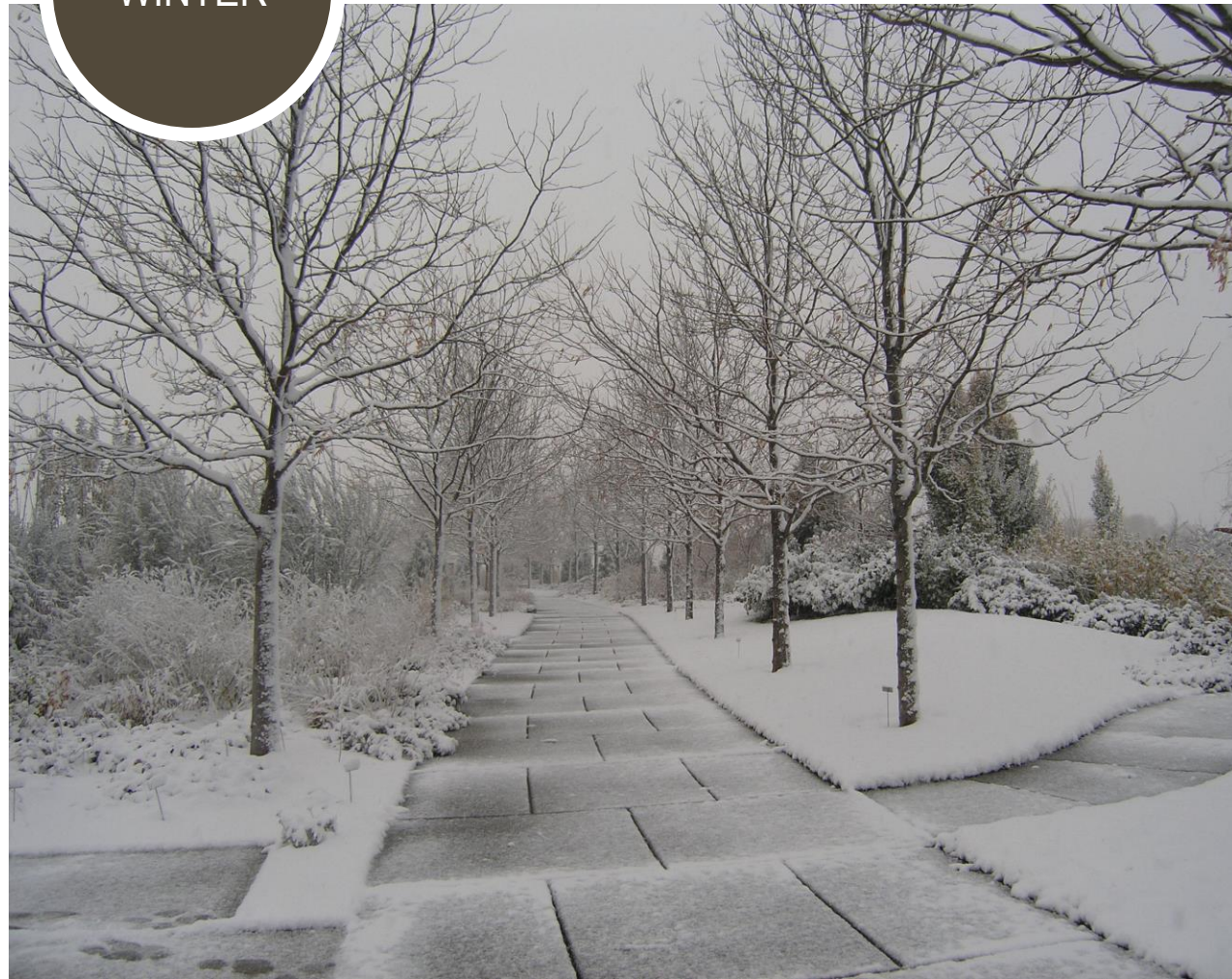


# Utah is unique

SUMMER



WINTER







# Utah needs its own style







# Simple shift = huge benefit

ENGLISH  
STYLE



UTAH  
LOCALSCAPE







# Easy to understand

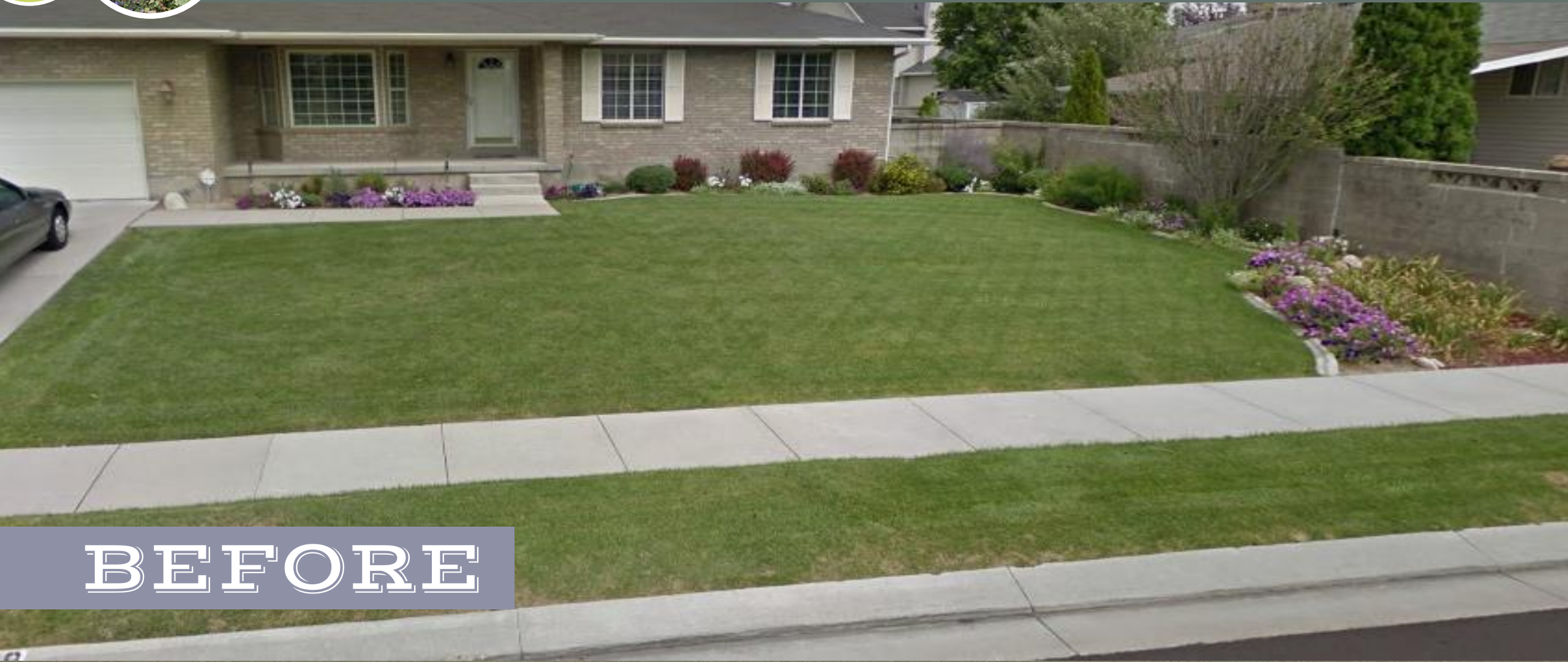






# Increases curb appeal

Localscapes graduate, front yard progression



**BEFORE**





# Increases curb appeal

Localscapes graduate, front yard progression



**YEAR 2**





# Reduces maintenance

Localscapes graduate, new home landscape installation







# Simplifies irrigation

Localscapes graduate, new home landscape installation







# Improves function

Localscapes graduate, complete yard renovation







# The Localscapes House











# STEP 1

---

# CENTRAL OPEN SHAPE





# Central Open Shape

Central  
Open  
Shape









# Lack of Central Open Shape





# Lack of Central Open Shape





# Increase curb appeal

Central  
Open  
Shape





# Reduce maintenance

Central  
Open  
Shape





# Simplify irrigation

Central  
Open  
Shape





# Improve function

Central  
Open  
Shape







# Improve function

TYPICAL  
YARD



UTAH  
LOCALSCAPE





# Alternative Materials

Central  
Open  
Shape

1



**GRAVEL**



# Alternative Materials

Central  
Open  
Shape

1



**GROUNDCOVER**



# Alternative Materials

Central  
Open  
Shape

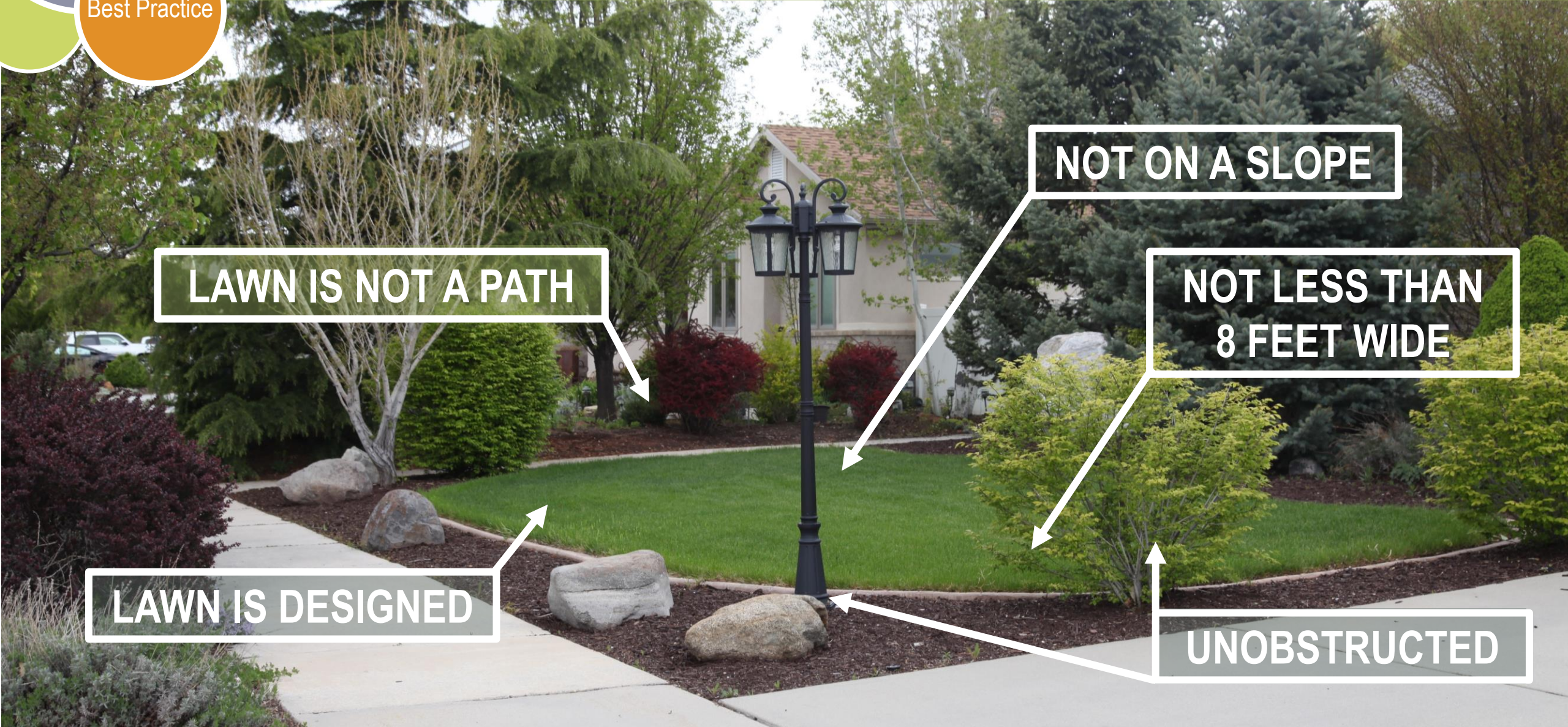


**HARDSCAPE**





# Best practices for Central Open Shape



LAWN IS NOT A PATH

NOT ON A SLOPE

NOT LESS THAN 8 FEET WIDE

LAWN IS DESIGNED

UNOBSTRUCTED





# STEP 2

---

# GATHERING AREAS





# Gathering Areas

Private Seating Area



Patio











# Add curb appeal

Gathering  
Areas

2





# Reduce maintenance

Gathering  
Areas

2



BEFORE



# Reduce maintenance

Gathering  
Areas

2



**AFTER**



# Improve landscape function

FRONT  
YARD



BACK  
YARD





# Customize to your interests

Gathering Areas  
**2**





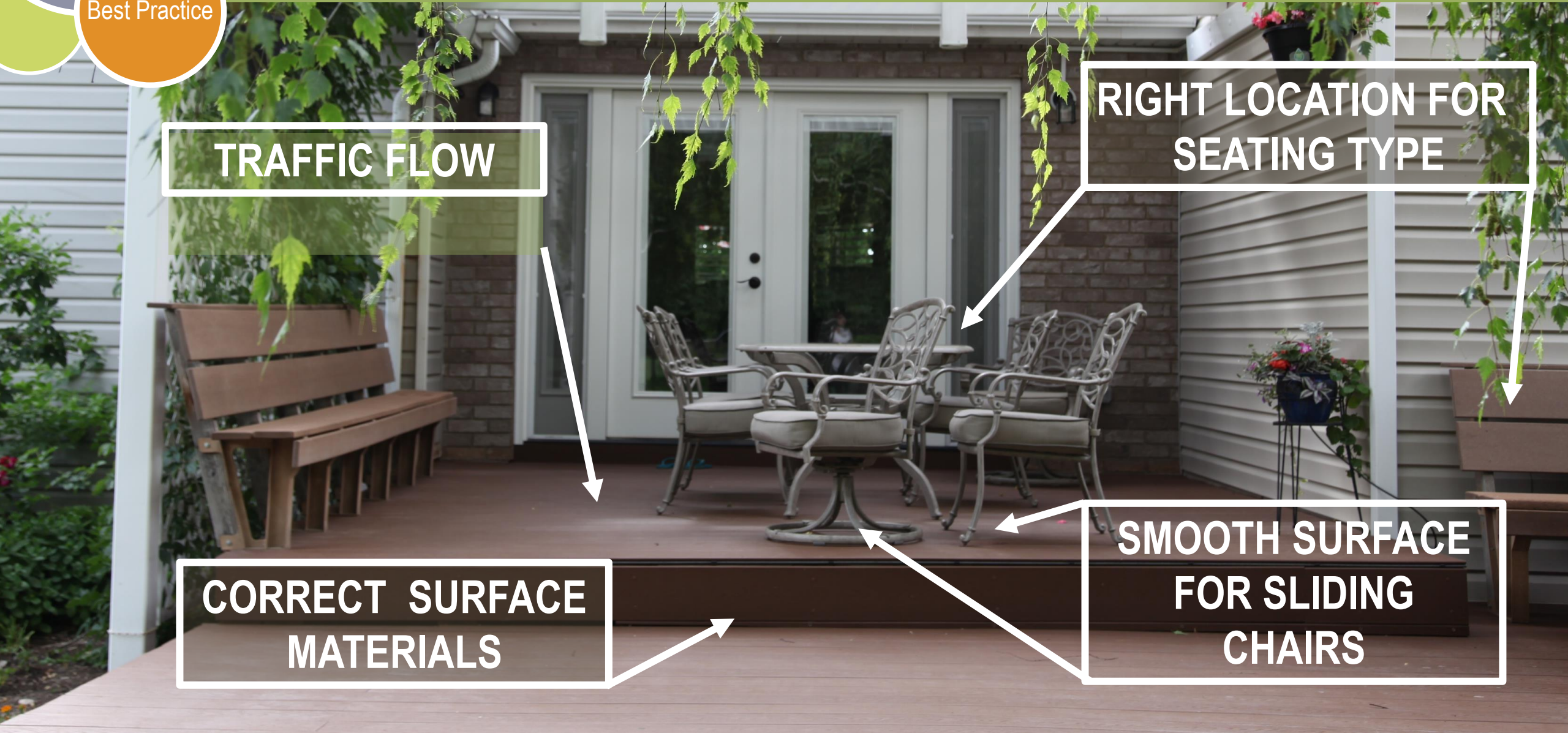
# Best practices for Gathering Areas

**TRAFFIC FLOW**

**RIGHT LOCATION FOR SEATING TYPE**

**CORRECT SURFACE MATERIALS**

**SMOOTH SURFACE FOR SLIDING CHAIRS**







# STEP 3

---

# ACTIVITY ZONES





# Activity Zones

Activity  
Zones

3



Vegetable Garden  
Raised Beds on Bark  
Mulch

Children's Play Area  
Playground Bark  
Surfacing









MYSTERY  
PLANT







# Reduce maintenance

Activity Zones **3**





# Simplify irrigation

Activity Zones  
**3**





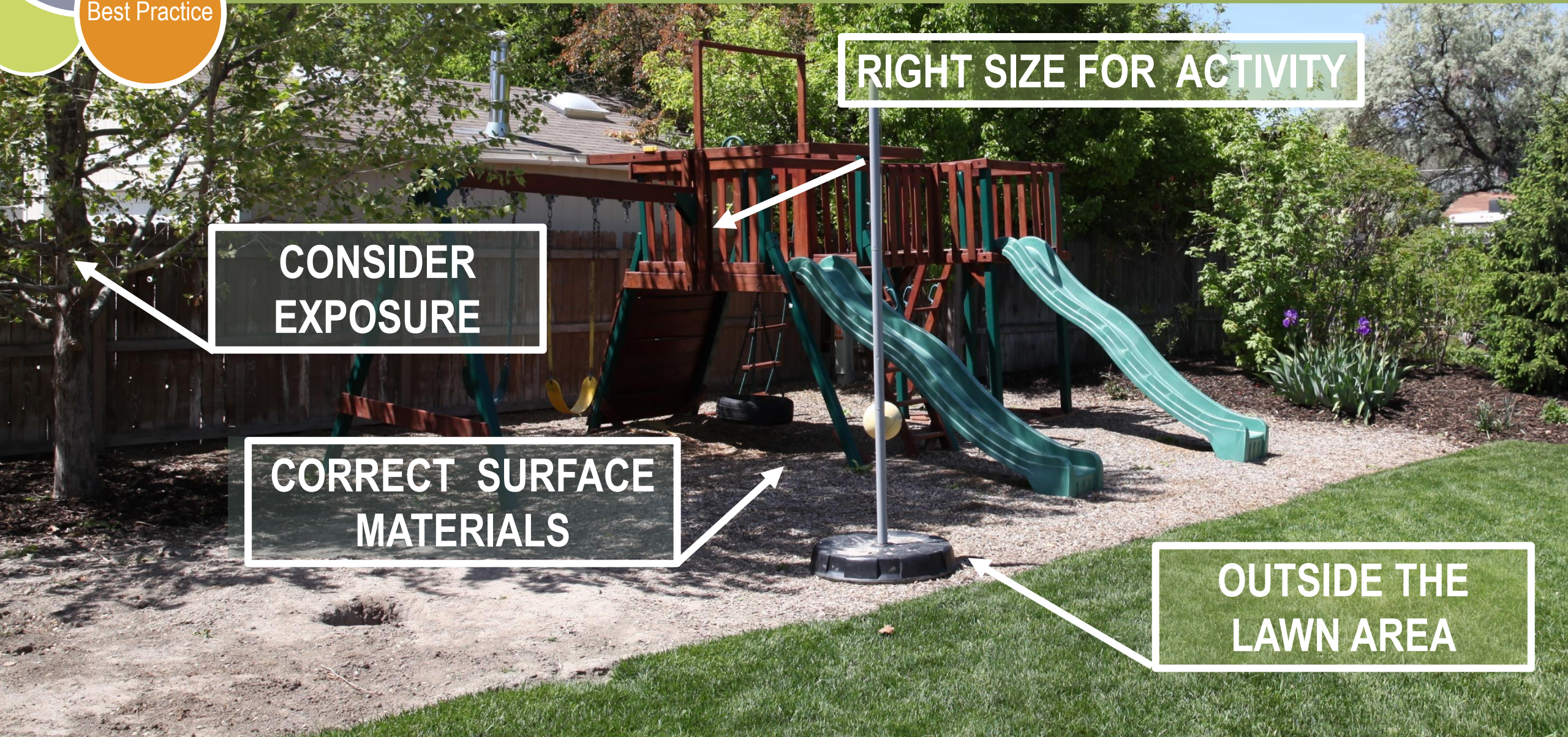
# Improve function





Best Practice

# Best practices for Activity Zones



RIGHT SIZE FOR ACTIVITY

CONSIDER EXPOSURE

CORRECT SURFACE MATERIALS

OUTSIDE THE LAWN AREA





# STEP 4

---

# PATHS





# Paths

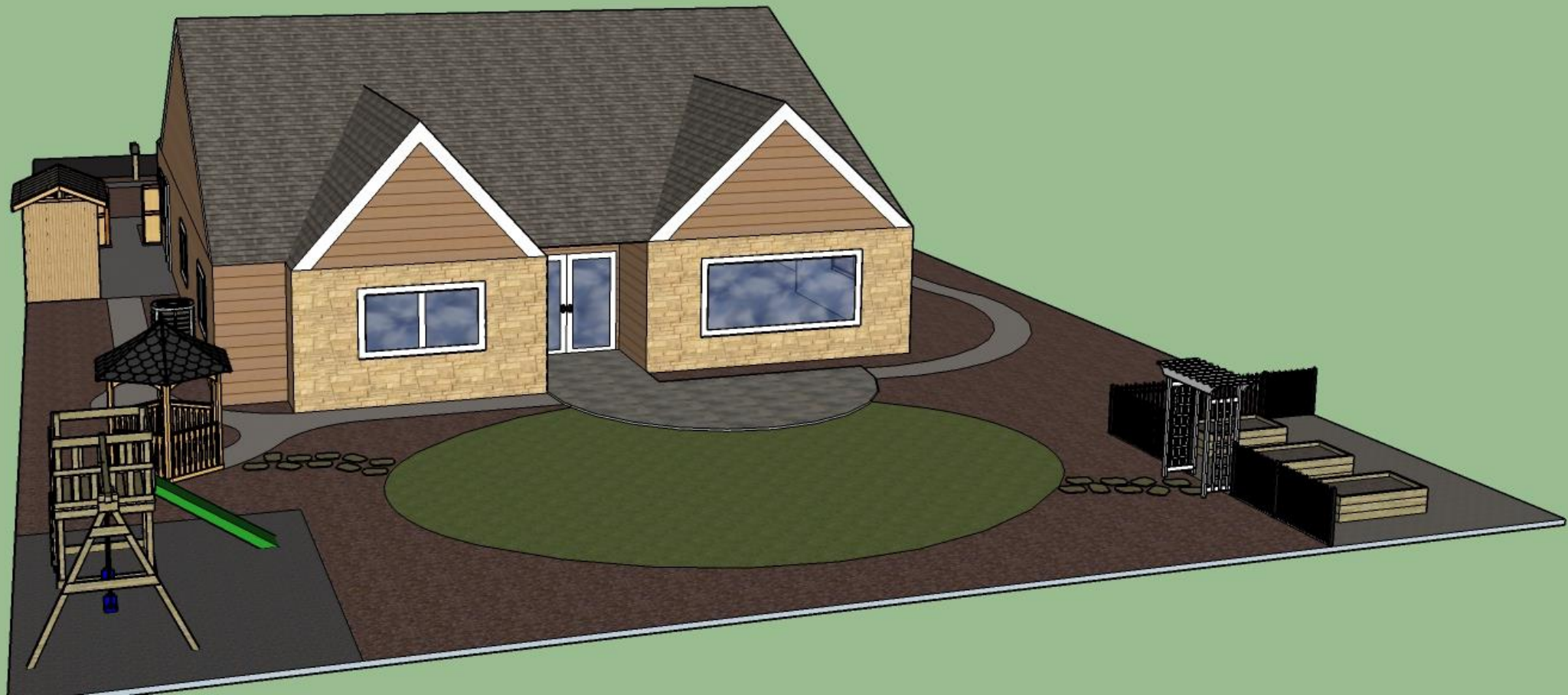














Photo: Mimi Giboin



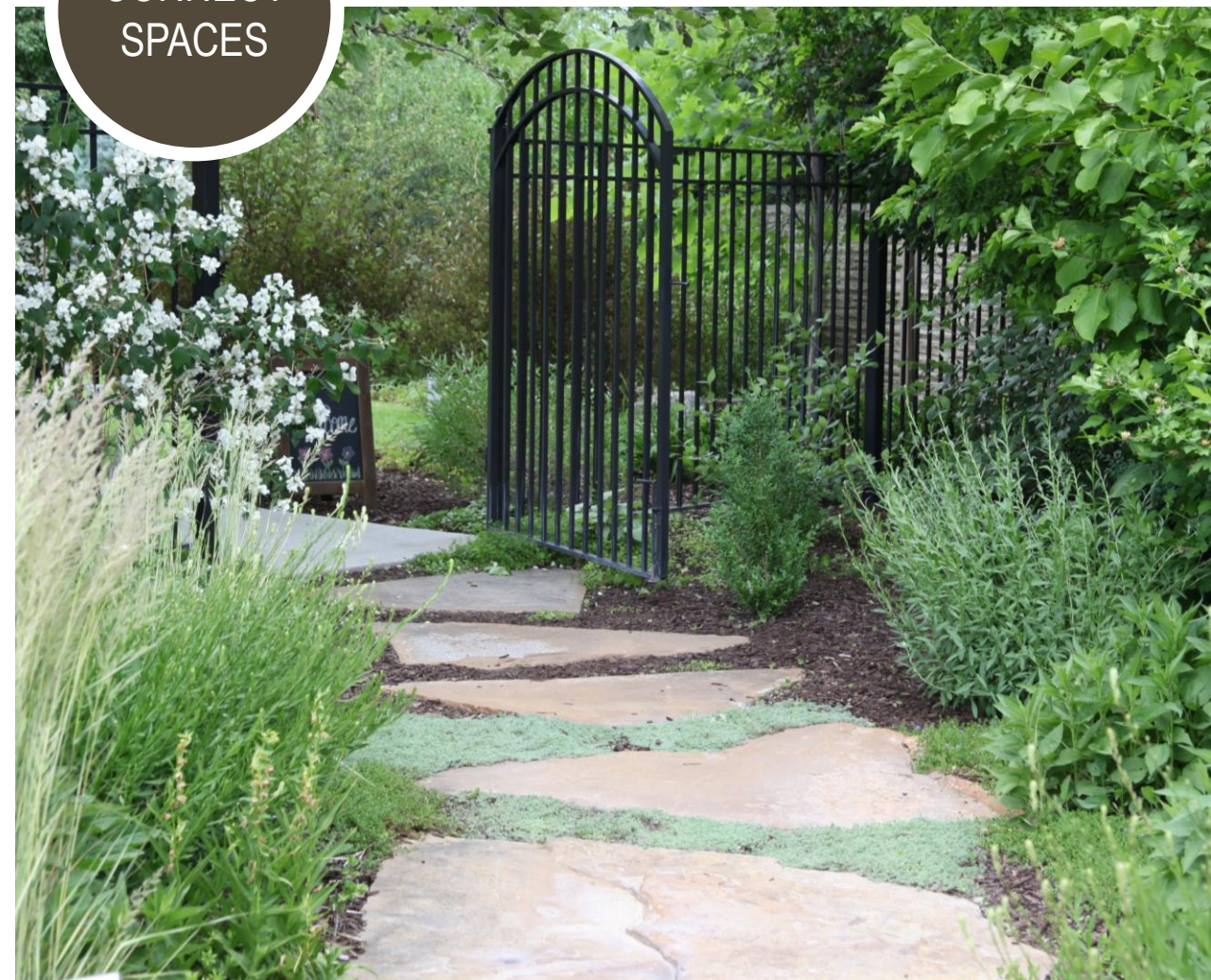


# Increase curb appeal

CREATE  
SHORT  
CUTS



CONNECT  
SPACES





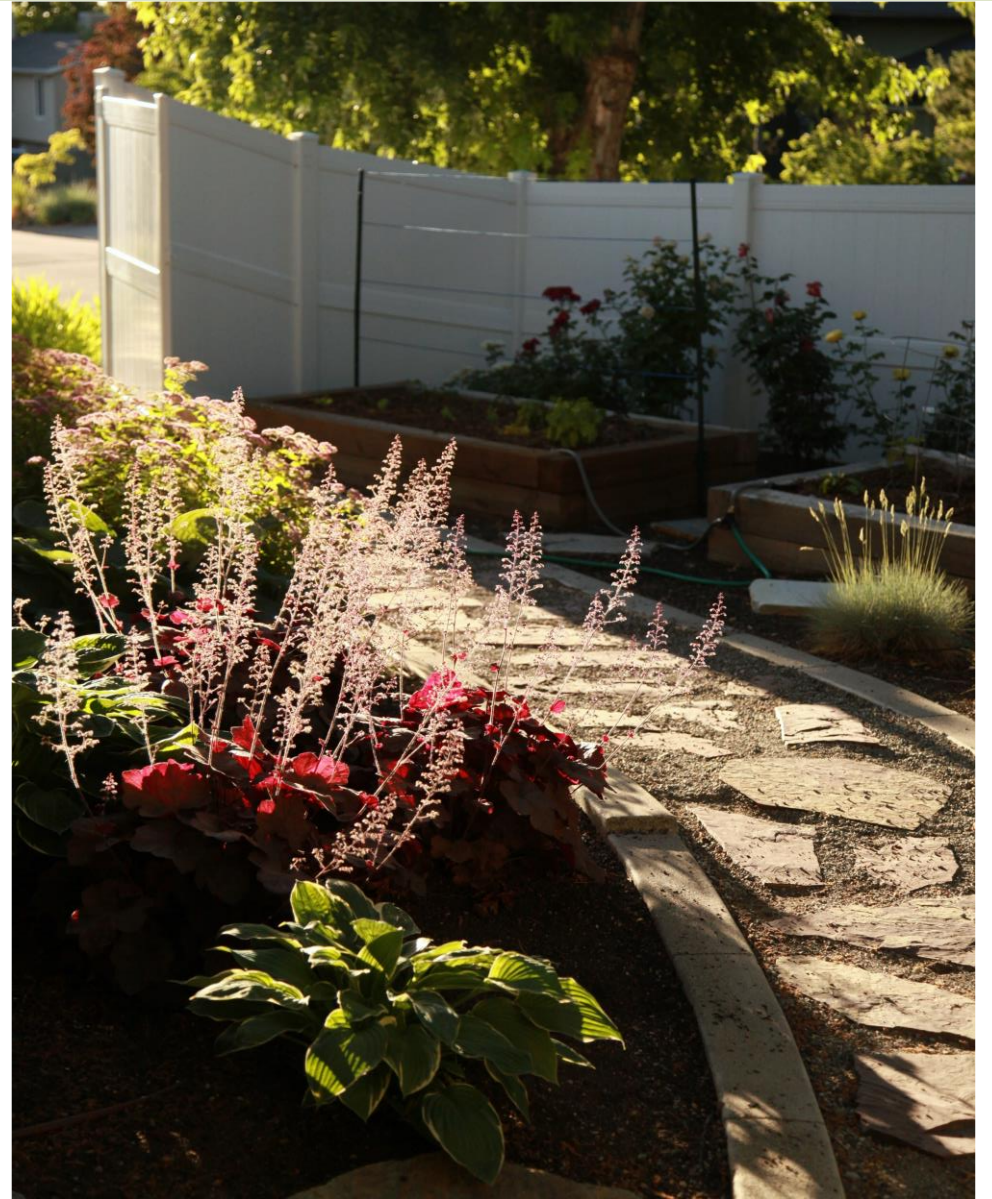
4 Paths

# Reduce maintenance





# Improve function





# Best practices for Paths



**OPTIONAL PATHS MAY BE  
LOOSE MATERIALS**

**USE PATHS TO  
CONNECT SPACES**

**MAIN PATHS ARE EVEN,  
HARDSCAPE SURFACES**





# STEP 5

---

# PLANTING BEDS





# Planting Beds

















5 Planting Beds

# Increase curb appeal





5 Planting  
Beds

# Reduce maintenance





# Simplify irrigation





# Best practices for Planting Beds

USE UTAH-FRIENDLY PLANTS

ANNUALS IN CONTAINERS ONLY

DRIP IRRIGATION AND 3"-4" MULCH

NO LAWN PARK STRIP







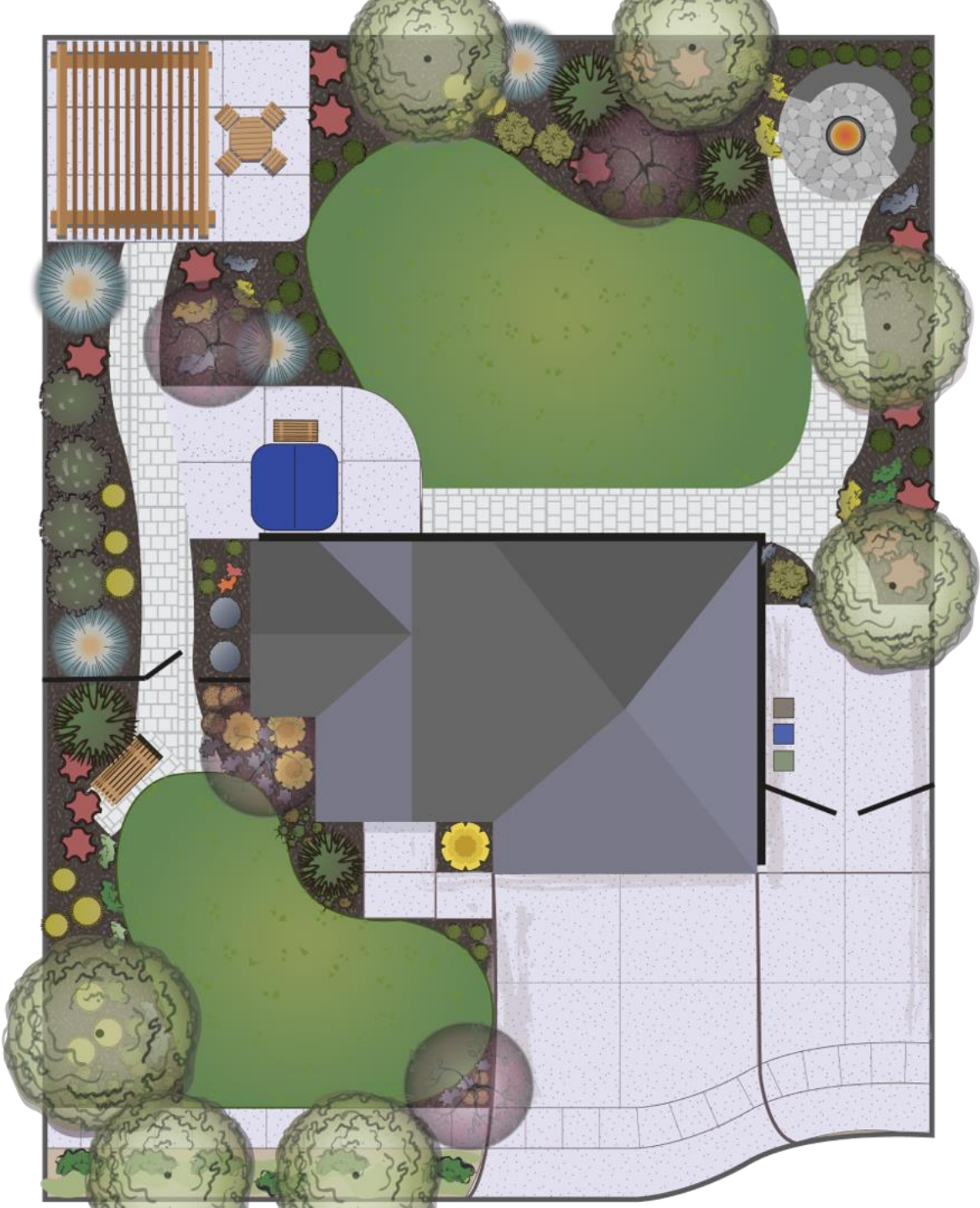
# PUTTING IT ALL TOGETHER







# RECTANGULAR LOT



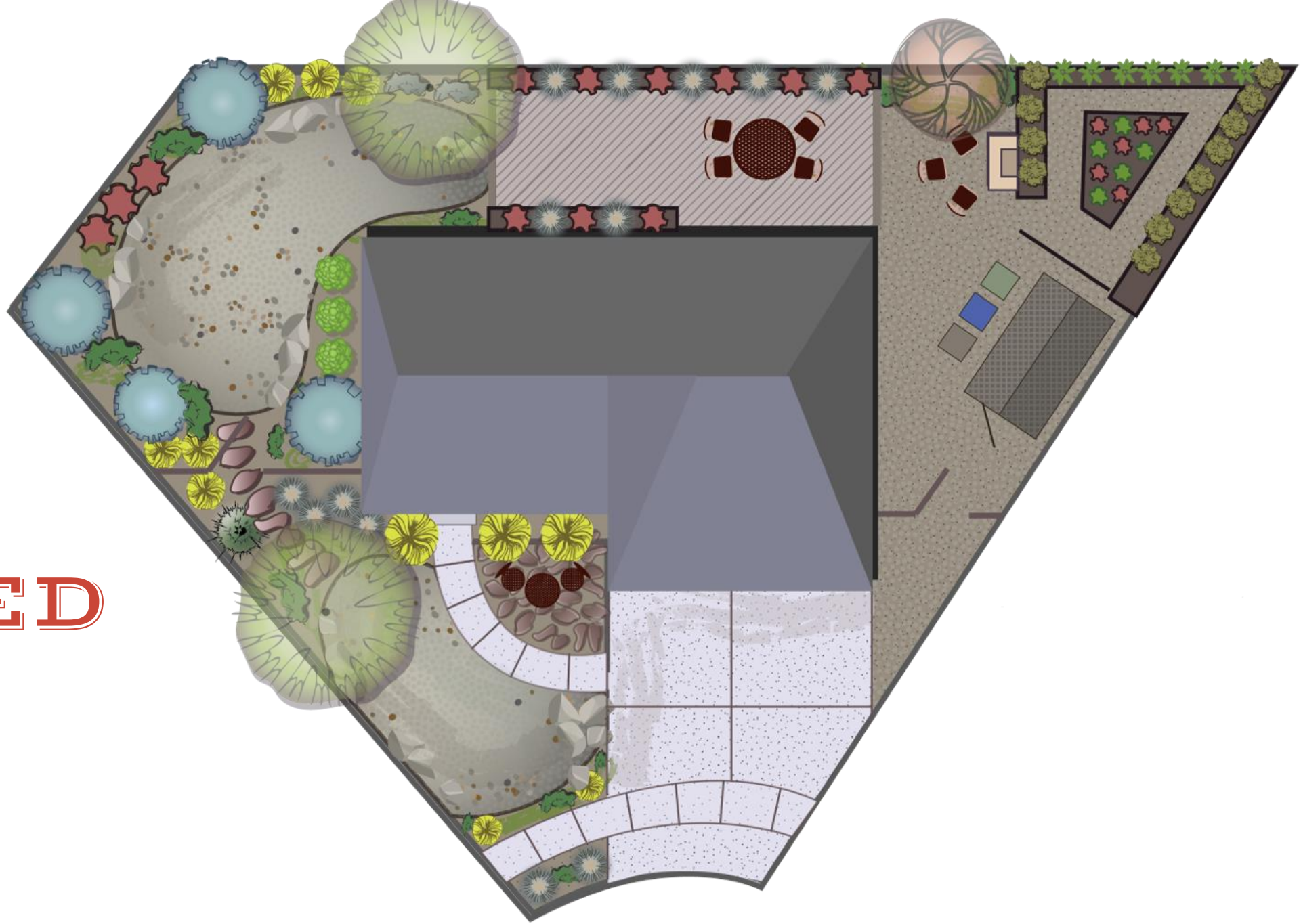




# CORNER LOT







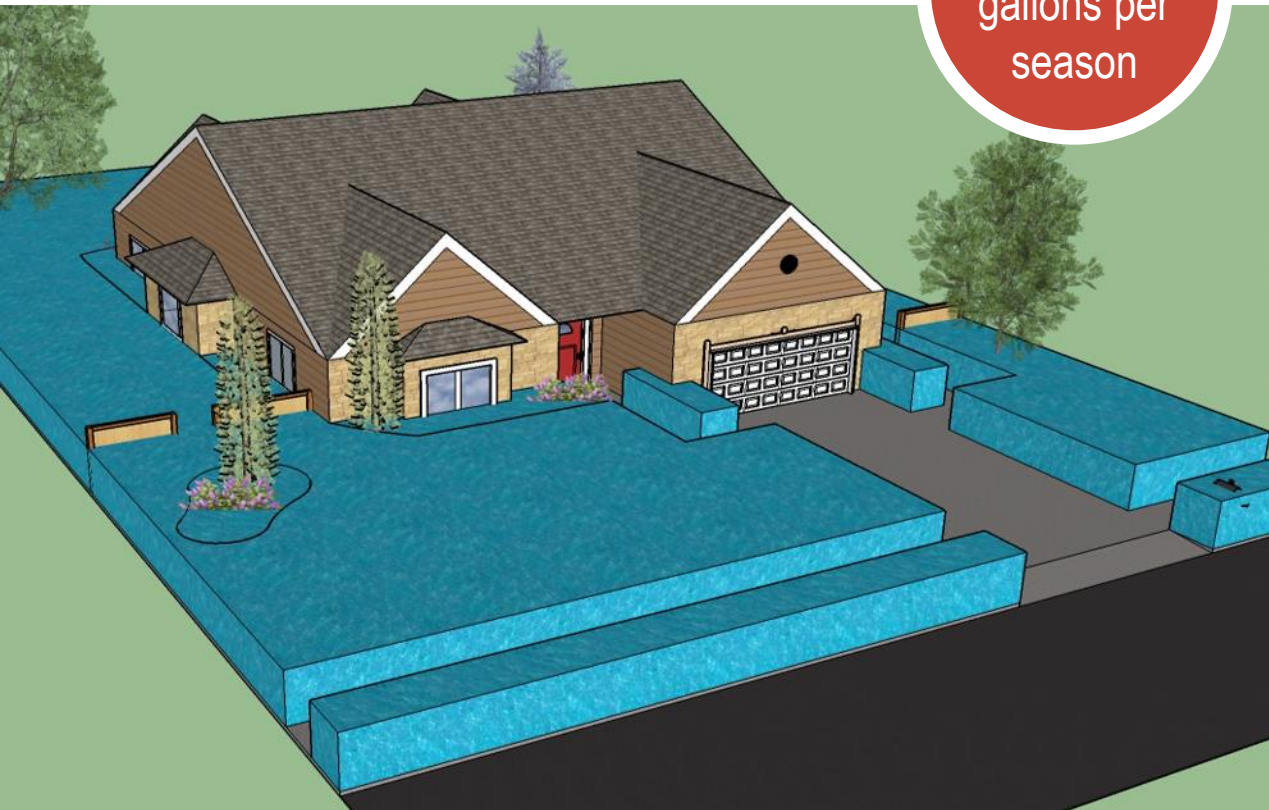
# ODD-SHAPED LOT





# Save 130,000 gallons per year

**196,250\***  
gallons per  
season



**64,766**  
gallons per  
season



\* Typical use of 40" of water per season on a quarter acre lot, applied with automatic sprinklers





# NEXT STEPS





## DO-IT-YOURSELF



- Attend Localscapes University
- Complete the Design Workshop
- Complete the Irrigation Workshop

## HIRE A PRO



- Localscapes Professional Partners
- Make sure to ask for a Localscape!
- Verify plan with Localscapes Homeowner Checklist

## HYBRID APPROACH



- Attend other classes as needed.
- Localscapes Professional Partners
- Verify plan with Localscapes Homeowner Checklist





# Do-it-yourself installation



**BEFORE**





# Do-it-yourself installation



**AFTER**





# Professional installation



**BEFORE**



# Professional installation



**AFTER**



# Hybrid approach



**BEFORE**



# Hybrid approach



**AFTER**



# Where to begin

A lawn park strip uses up to 10,000 gallons per season







Medium Tree

Part Shade Perennial Mix

Vegetable Garden (Activity Zone)

Children's Playset (Activity Zone)

Large Ornamental Grass

Central Open Shape

Large Tree

Backyard Patio (Gathering Space)

Gazebo (Gathering Space)

Focal Point Tree

Columnar Shrub

Small Shrub

Path

Shade Shrub

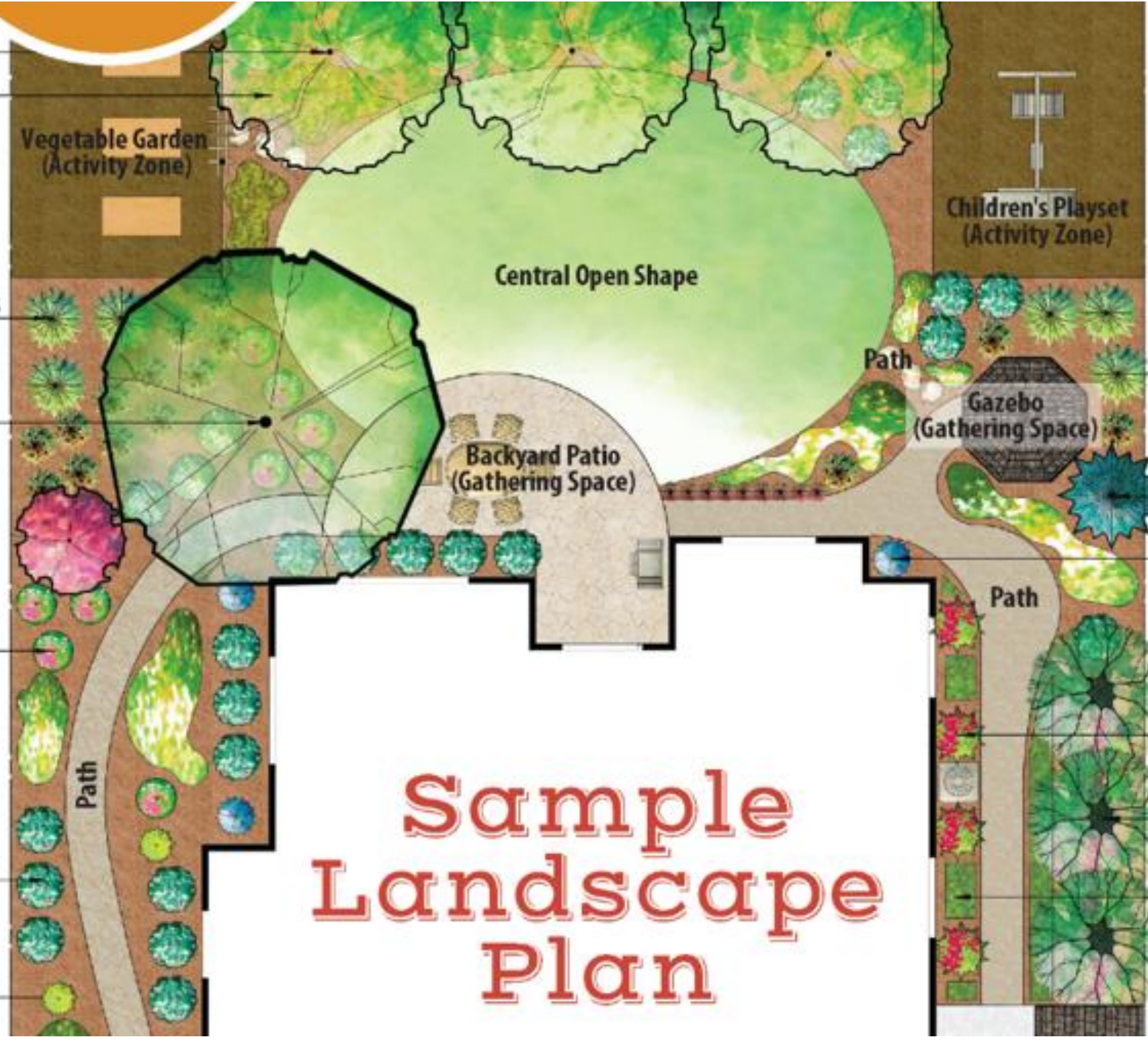
Flowering Shrub

Small Tree

Evergreen Shrub

Shade Perennial Mix

# Sample Landscape Plan







# Weber Basin's Learning Garden

WeberBasin.com



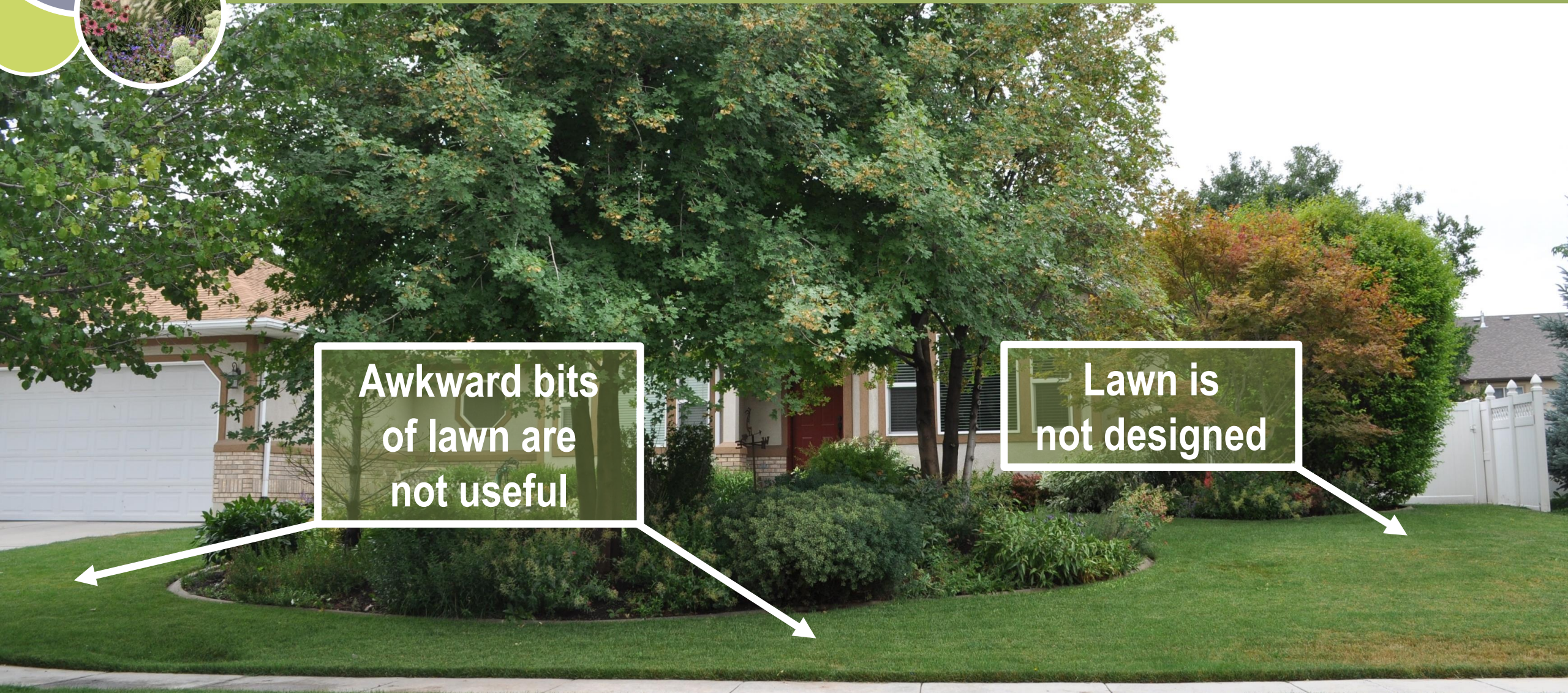




# QUIZ



# What's wrong?



Awkward bits  
of lawn are  
not useful

Lawn is  
not designed





# What is wrong?

**DISORGANIZED  
& MESSY**

**NO REASON TO  
USE THE SPACE**

**DIFFICULT TO  
WATER & MAINTAIN**





# What's wrong?



**PLANTING BEDS  
WATERED WITH  
OVERHEAD SPRAY**

**SIMPLIFY LAWN SHAPE**





# What's wrong?



**OBSTACLE  
IN LAWN**

**LAWN IN  
PARK STRIP**



# What's wrong?



**NO SPECIAL  
USE ZONES**



# What's wrong?



**PLANTING BED SHAPE IS  
DESIGNED INSTEAD OF  
LAWN SHAPE**





# Localscapes<sup>®</sup>

---

Landscape for where you live.

