

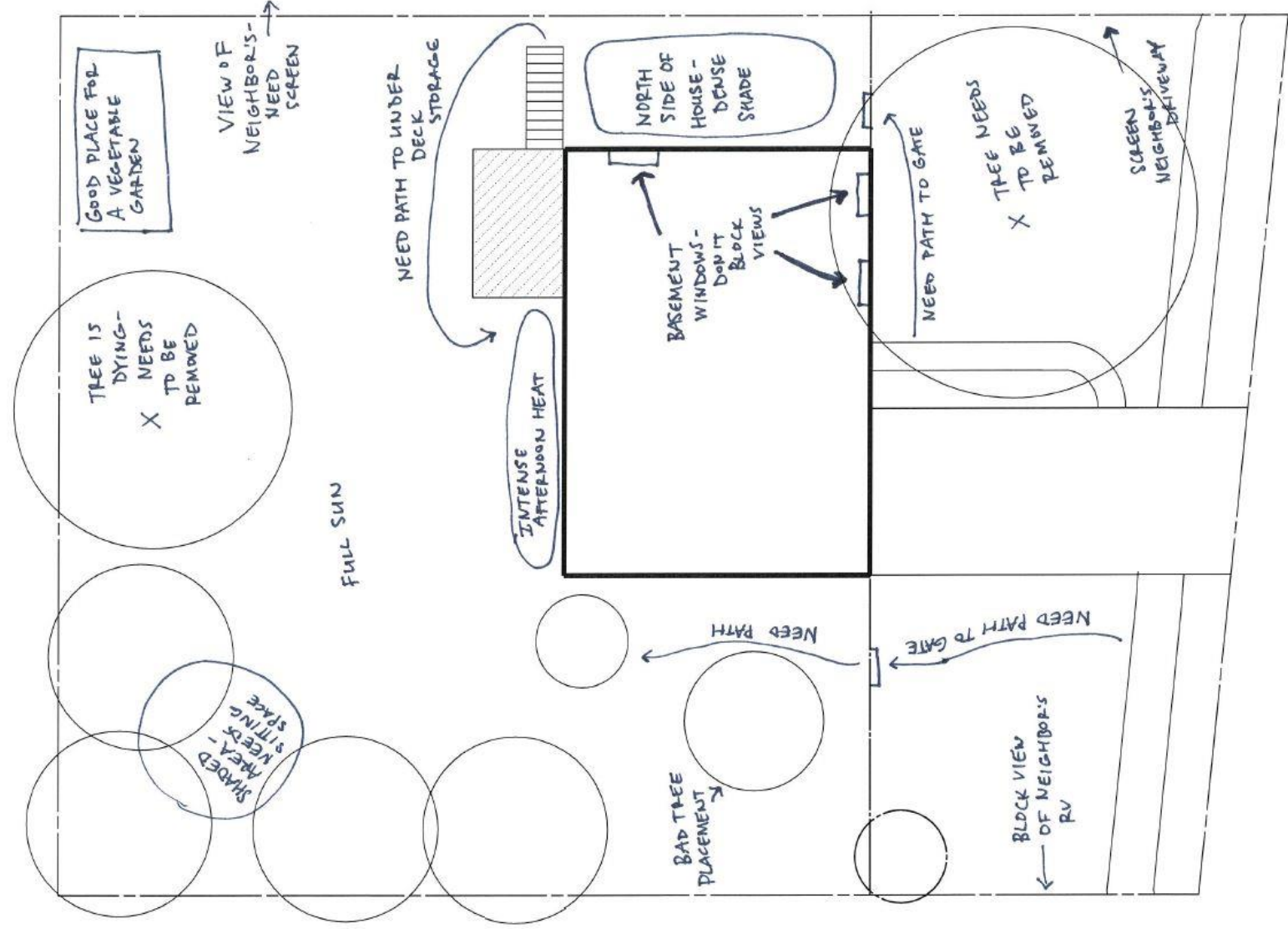


Localscapes Design Workshop



Site analysis

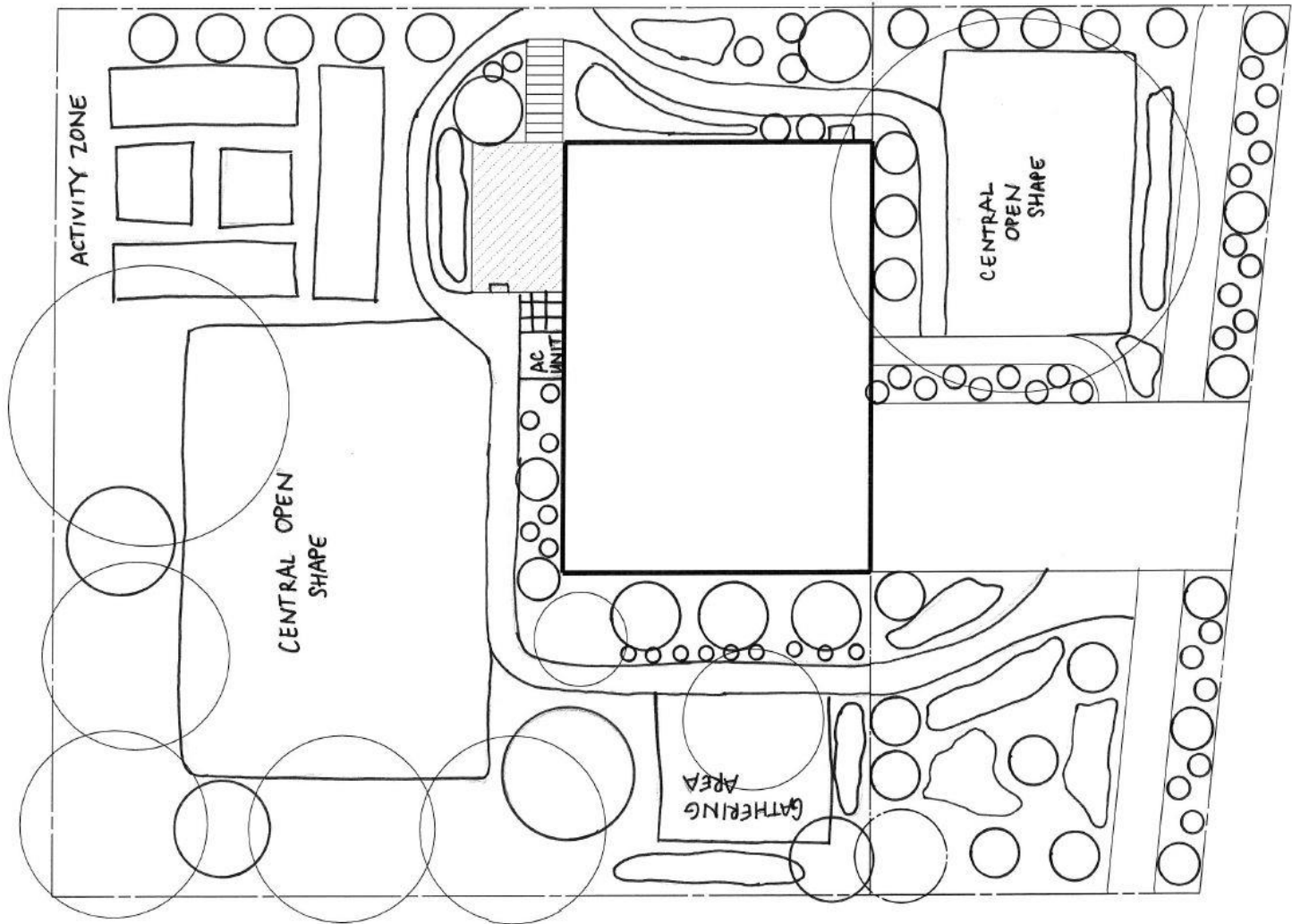
- Have you performed a site analysis?



What to expect



- Layout of 5 Localscape elements
- General layout of plants
- You fill in the plant lists and design details after class





Fancy drawings aren't required

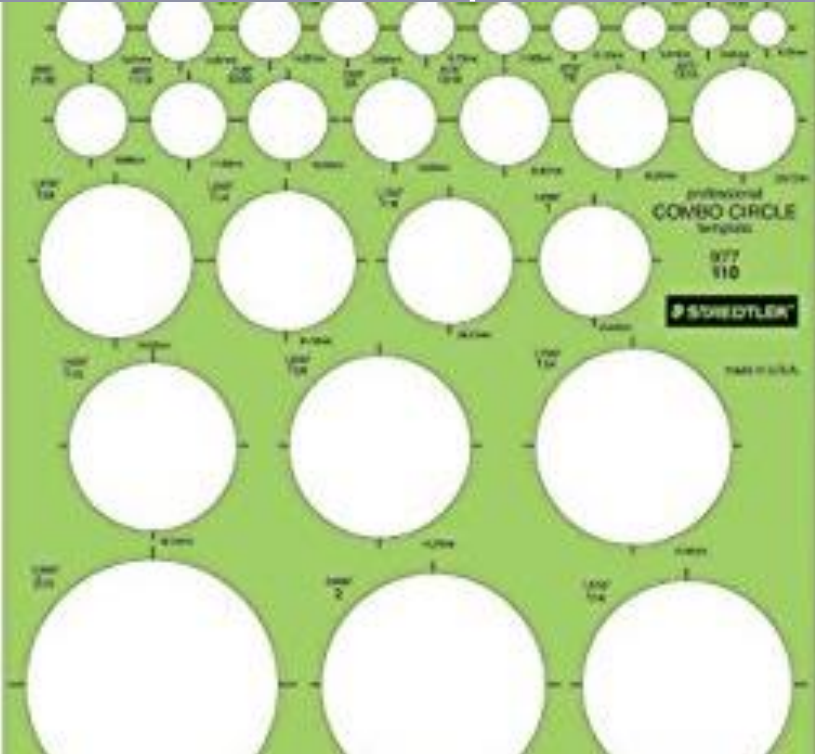
Drawing done by world-renowned plantsman, Piet Oudolf



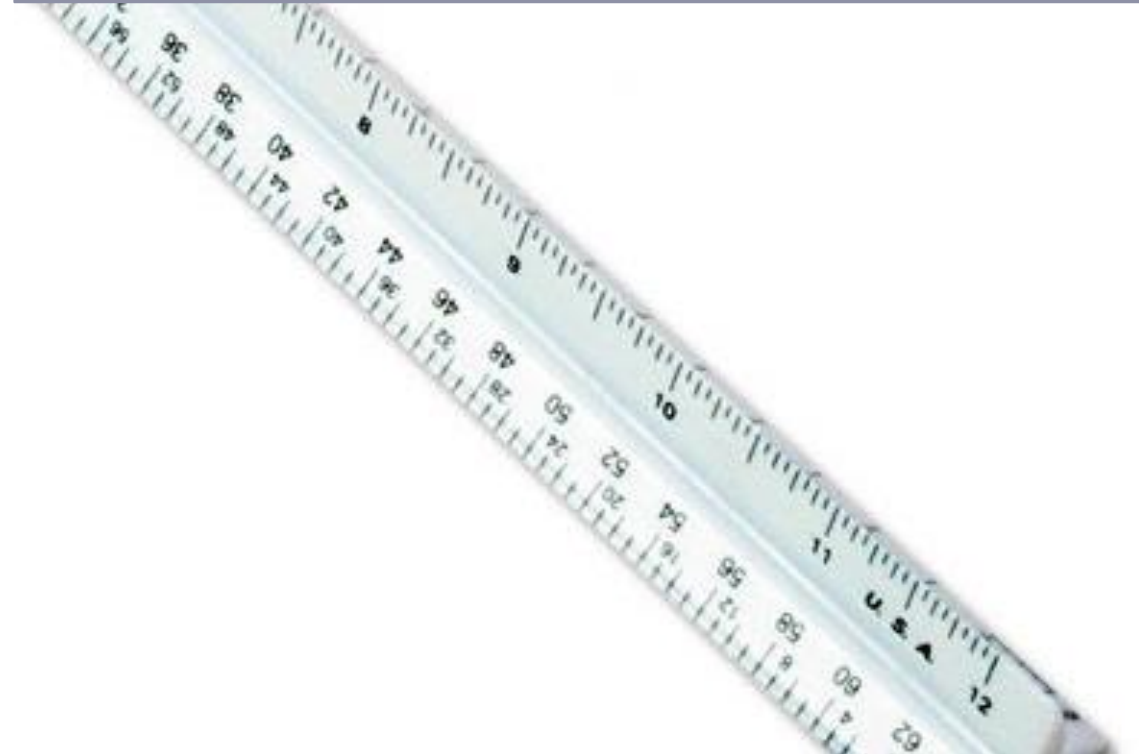


Tools to use in class

Circle templates



Scale



Design basics



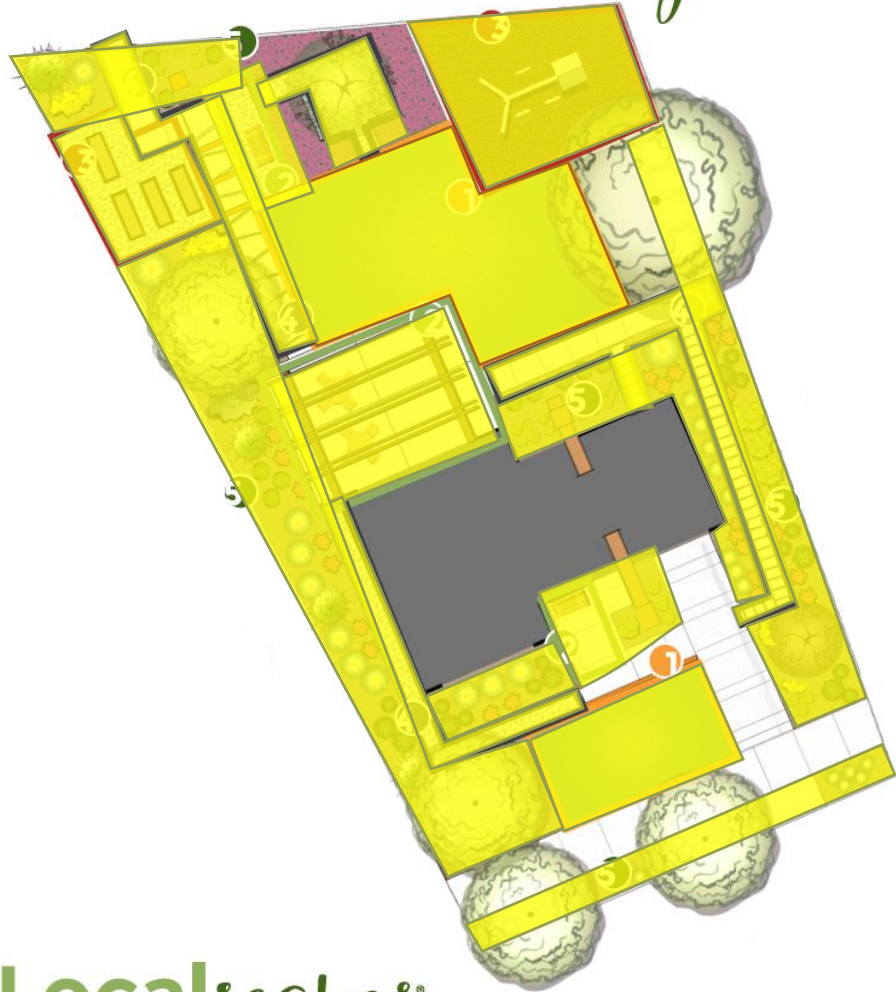
Formal



Informal

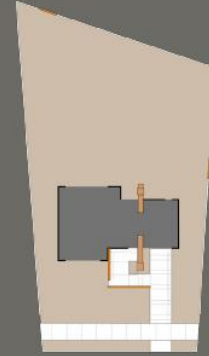


5 elements of a Localscape



Localscapes
Localscapes.com

Follow these steps to start your own plan:



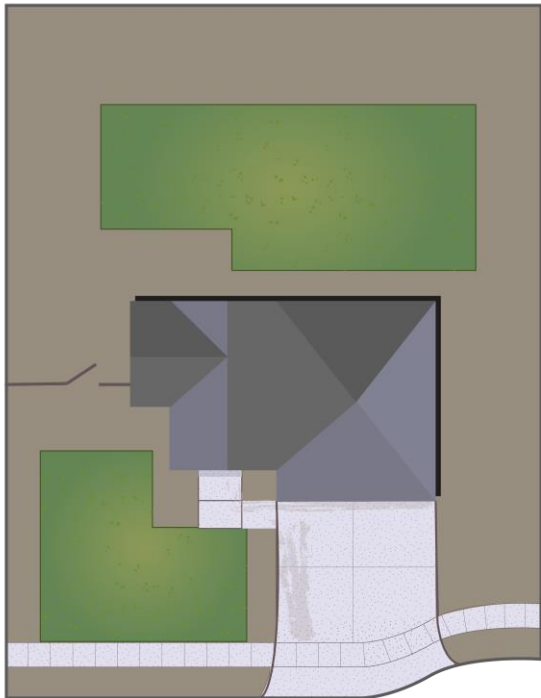
Central
Open
Shape



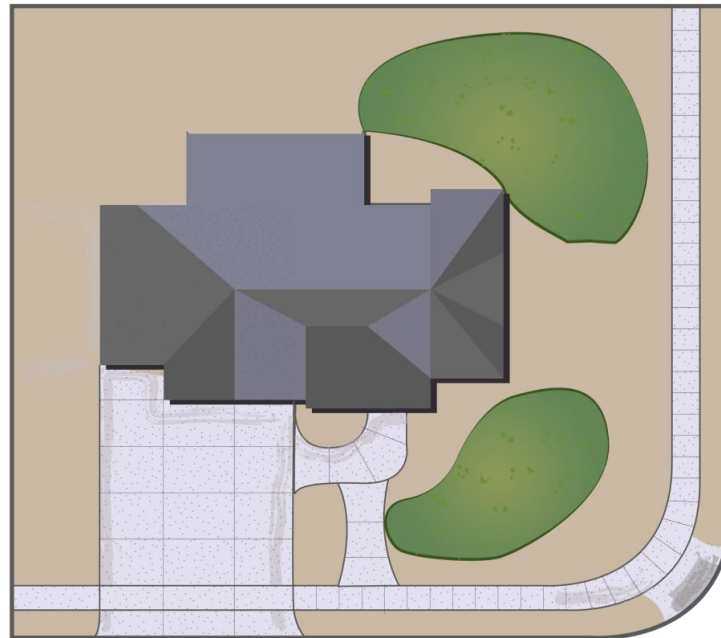
Central Open Shape locations

Central
Open
Shape

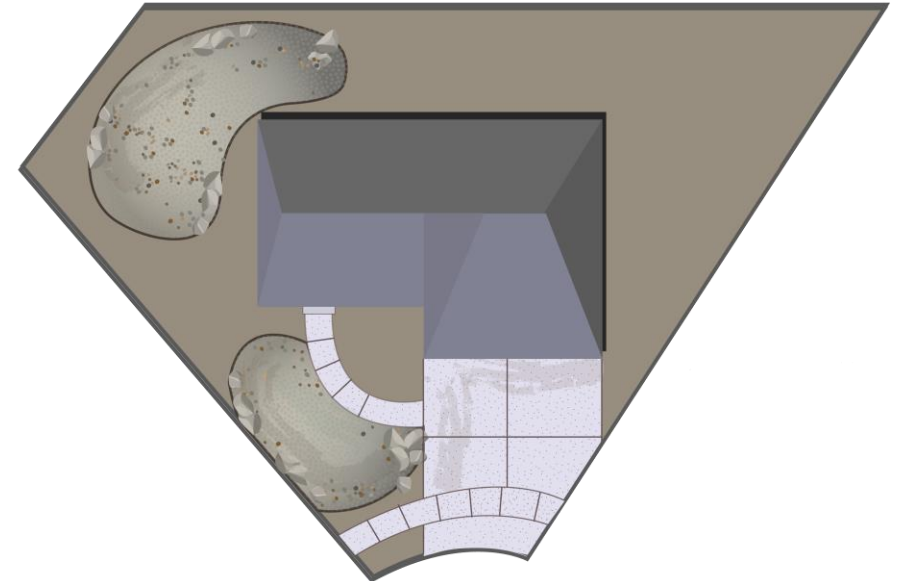
Rectangular lot



Corner lot



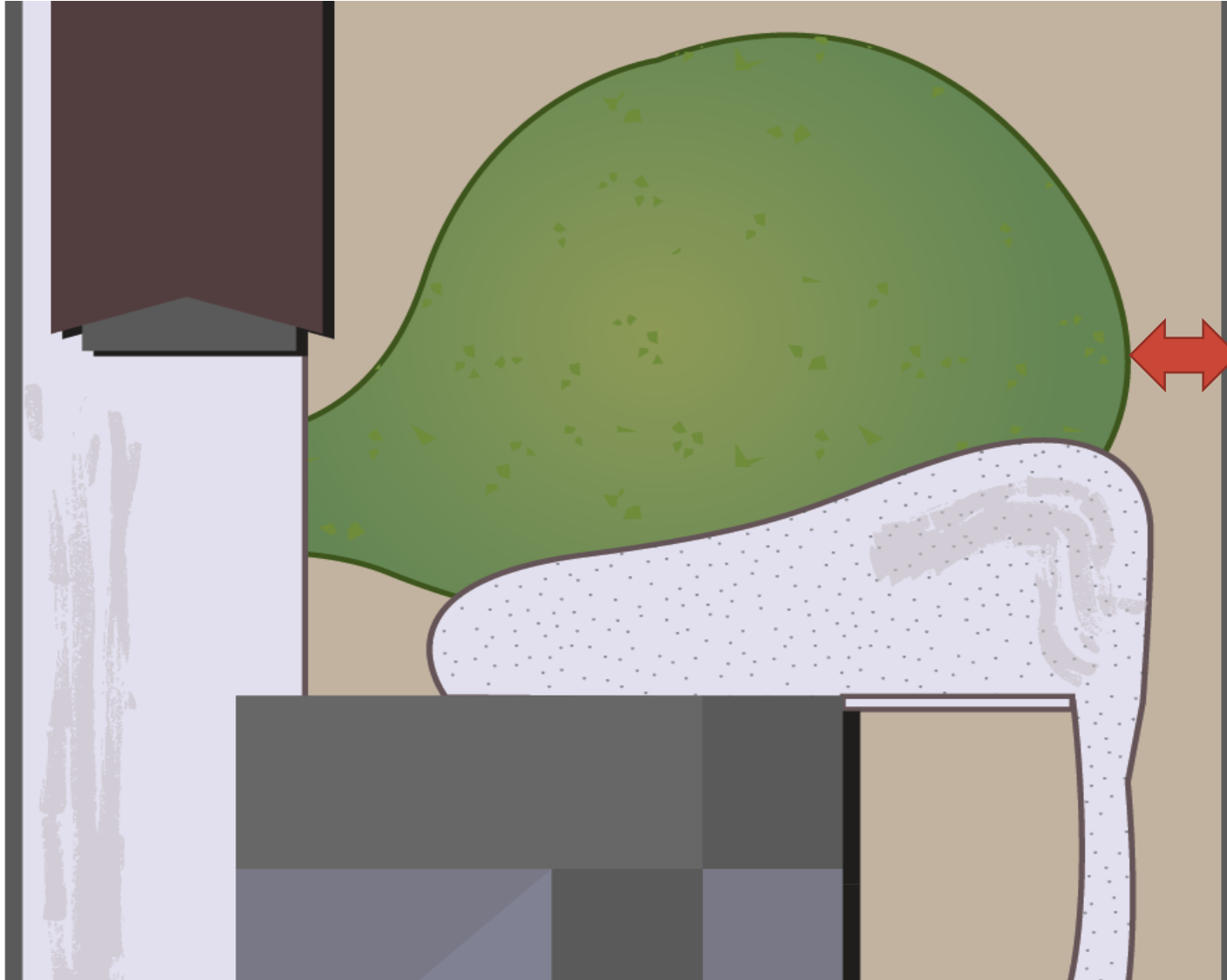
Odd-shaped lots



Proper placement

Central
Open
Shape

1



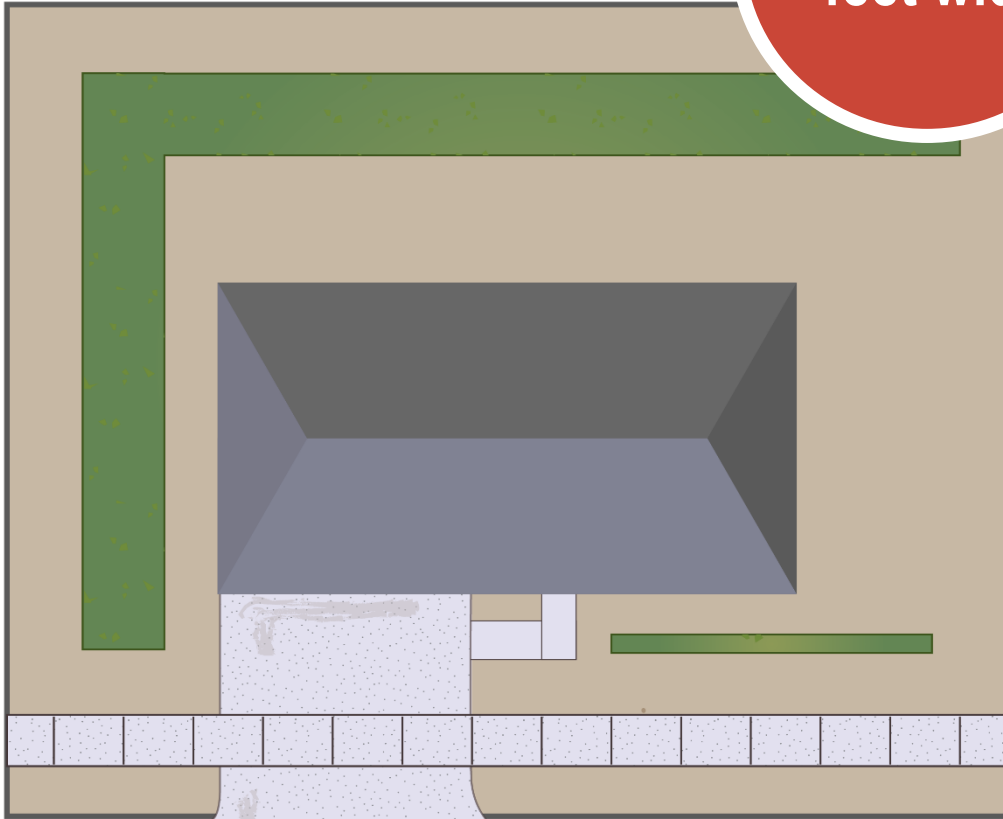
Remember to leave plenty of space between your property line and central open shape

Lawn shapes to avoid

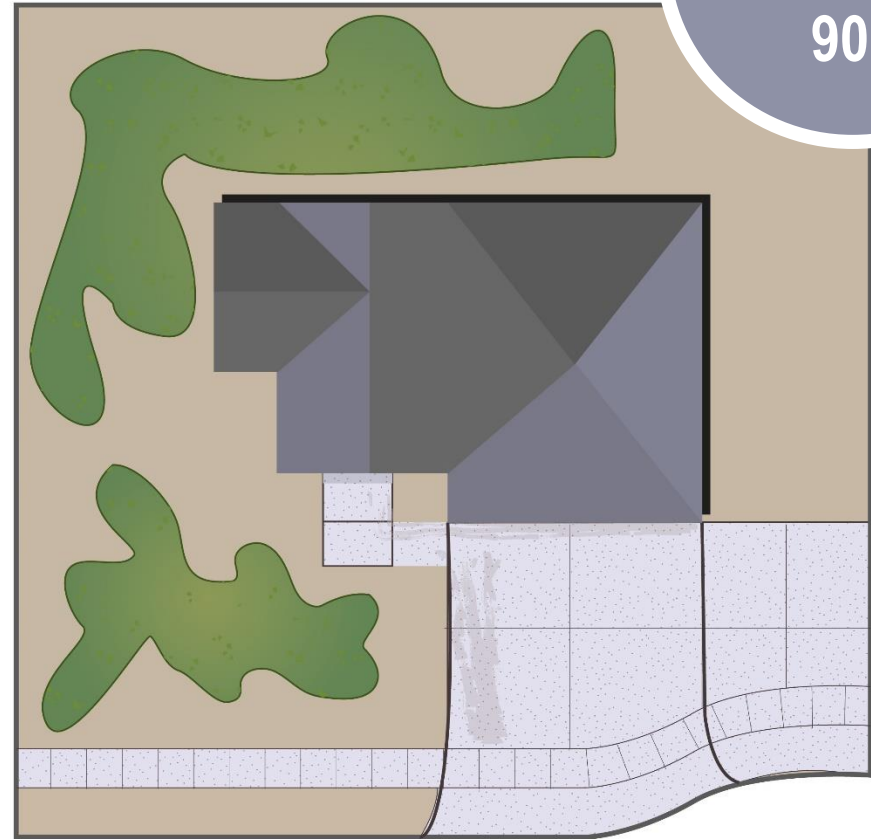
Central
Open
Shape

1

Less than 8
feet wide



Corners
less than
90°

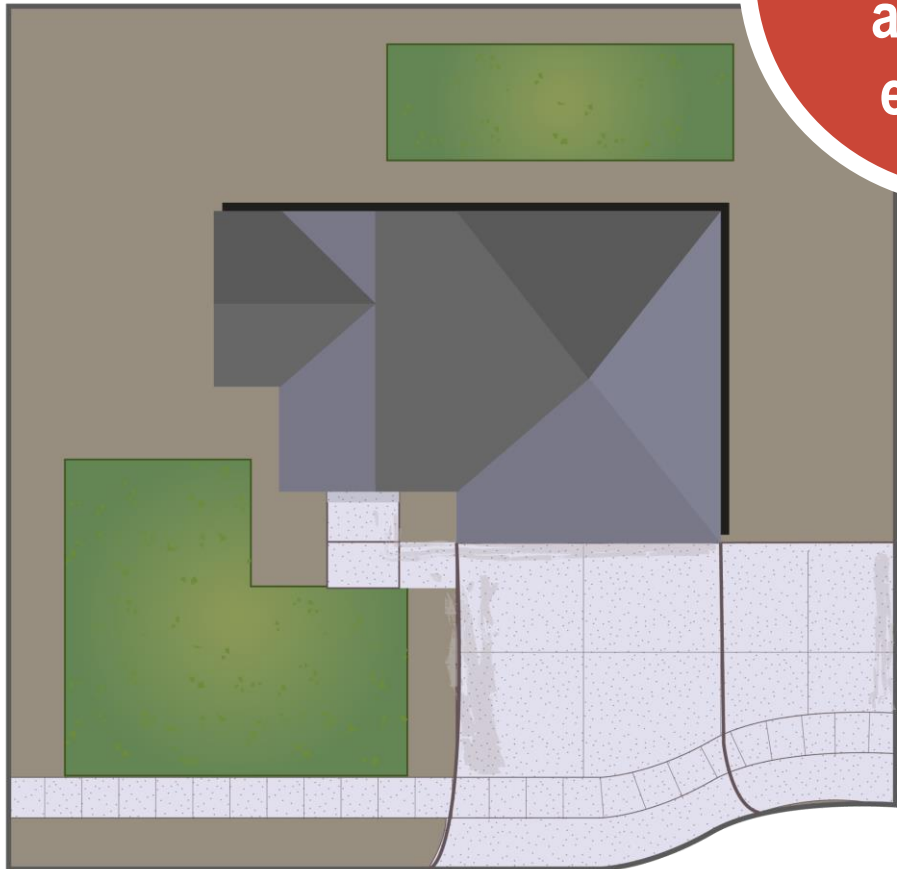


Highly efficient shapes

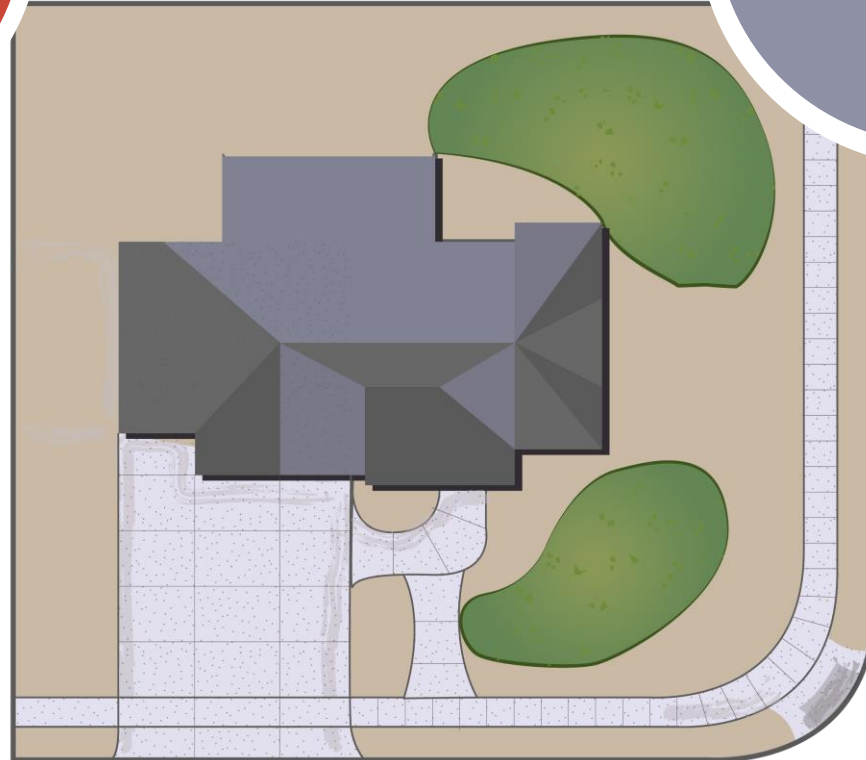
Central
Open
Shape

1

Squares &
rectangles
are most
efficient



Ovals & gently
curved are ok,
too

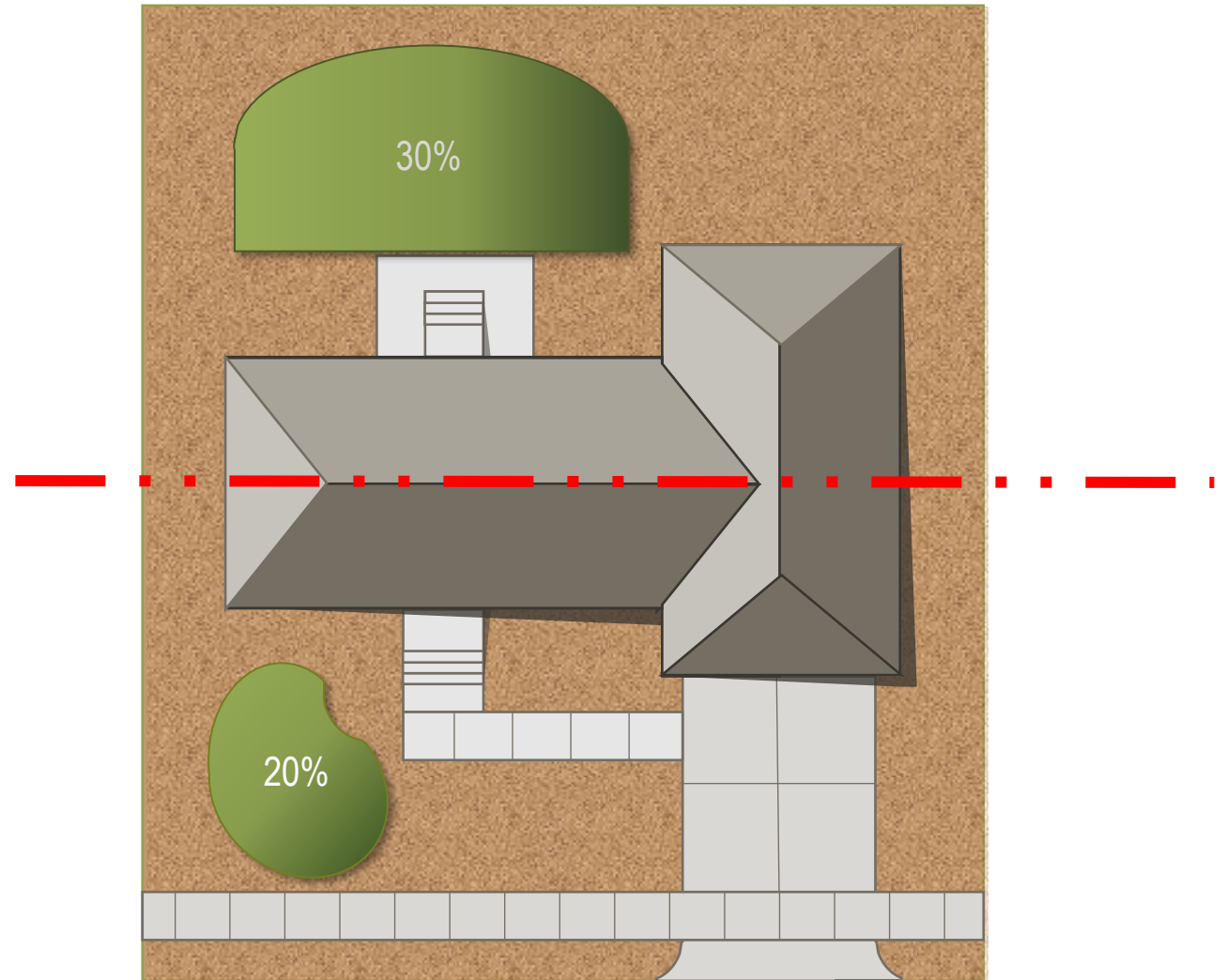


Central Open Shape Size

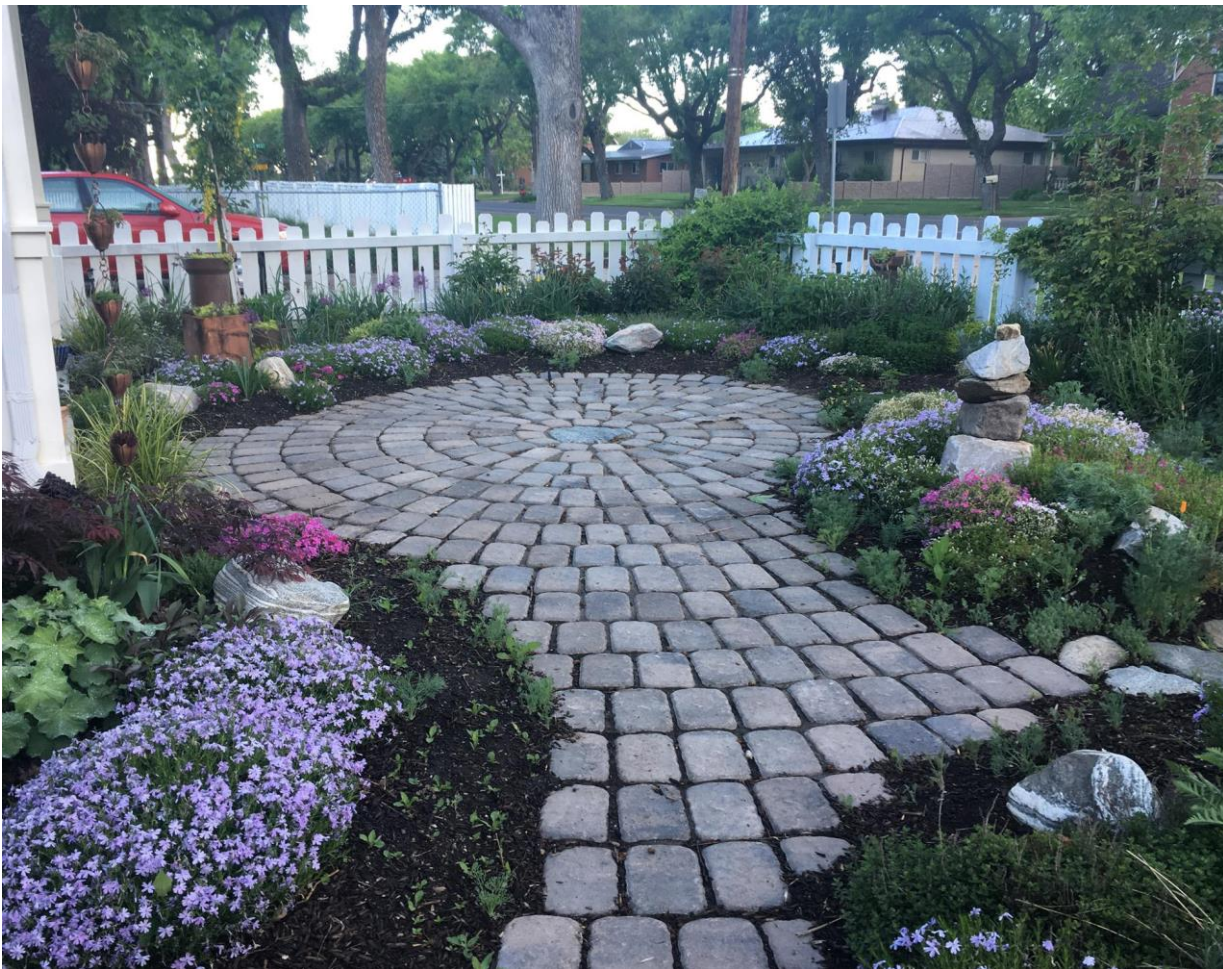
Central
Open
Shape

1

Central Open
Shape:
15-35% of
landscaped area



Defined Edge



Contrasting and Permanent Materials



WORK TIME: 20 MINUTES



QUESTIONS:

- What shape will fit best in the landscape?
- Is the Central Open Shape large enough?
- What odd bits of lawn can be removed?

INSTRUCTIONS:

- Place the Central Open Shape in the landscape



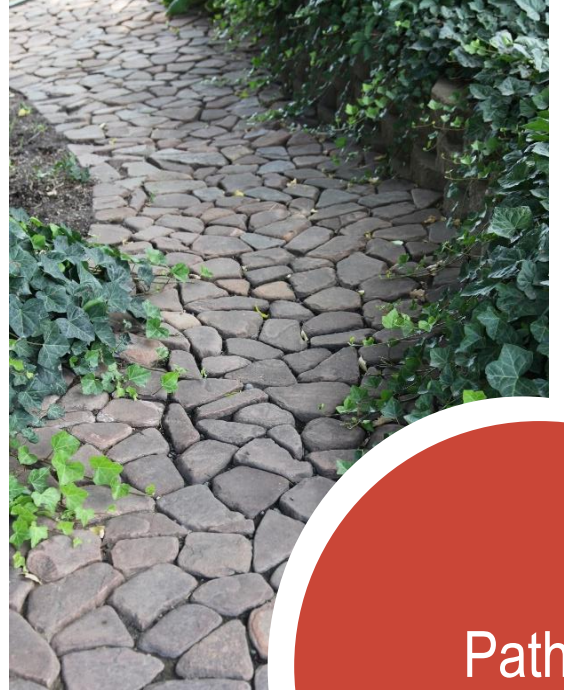
CENTRAL
OPEN SHAPE



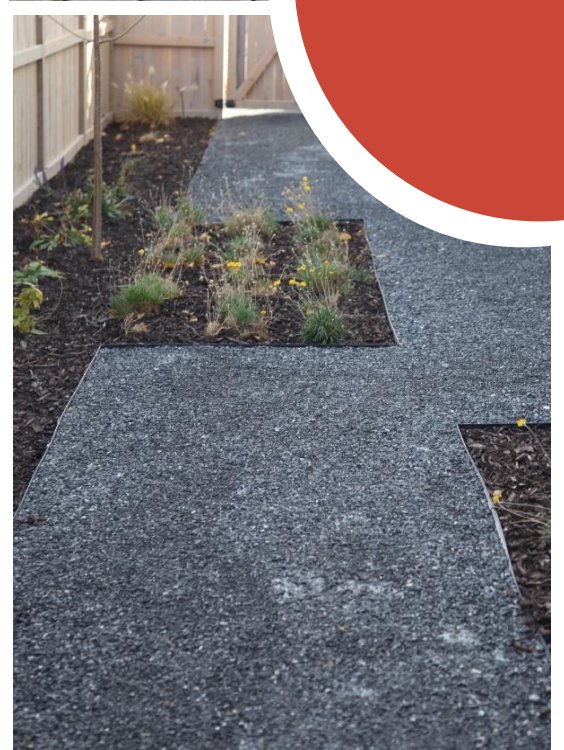
Gathering
Areas



Activity
Zones



Paths



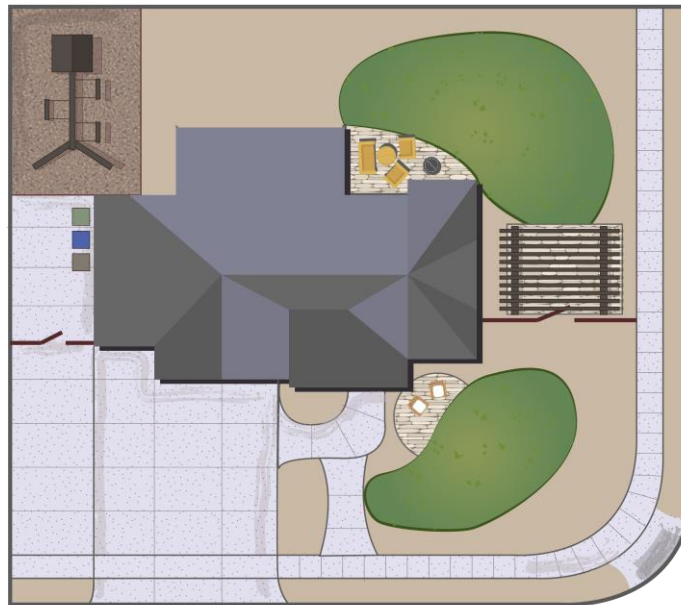


Hardscape element locations

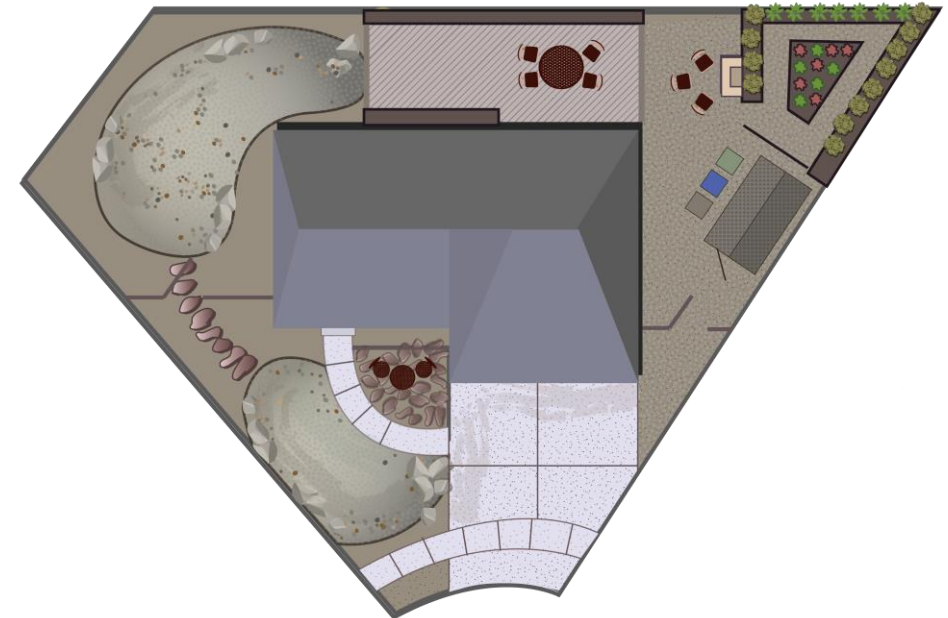
Gathering Areas



Activity Zones



Paths



Usage



Frequent
use



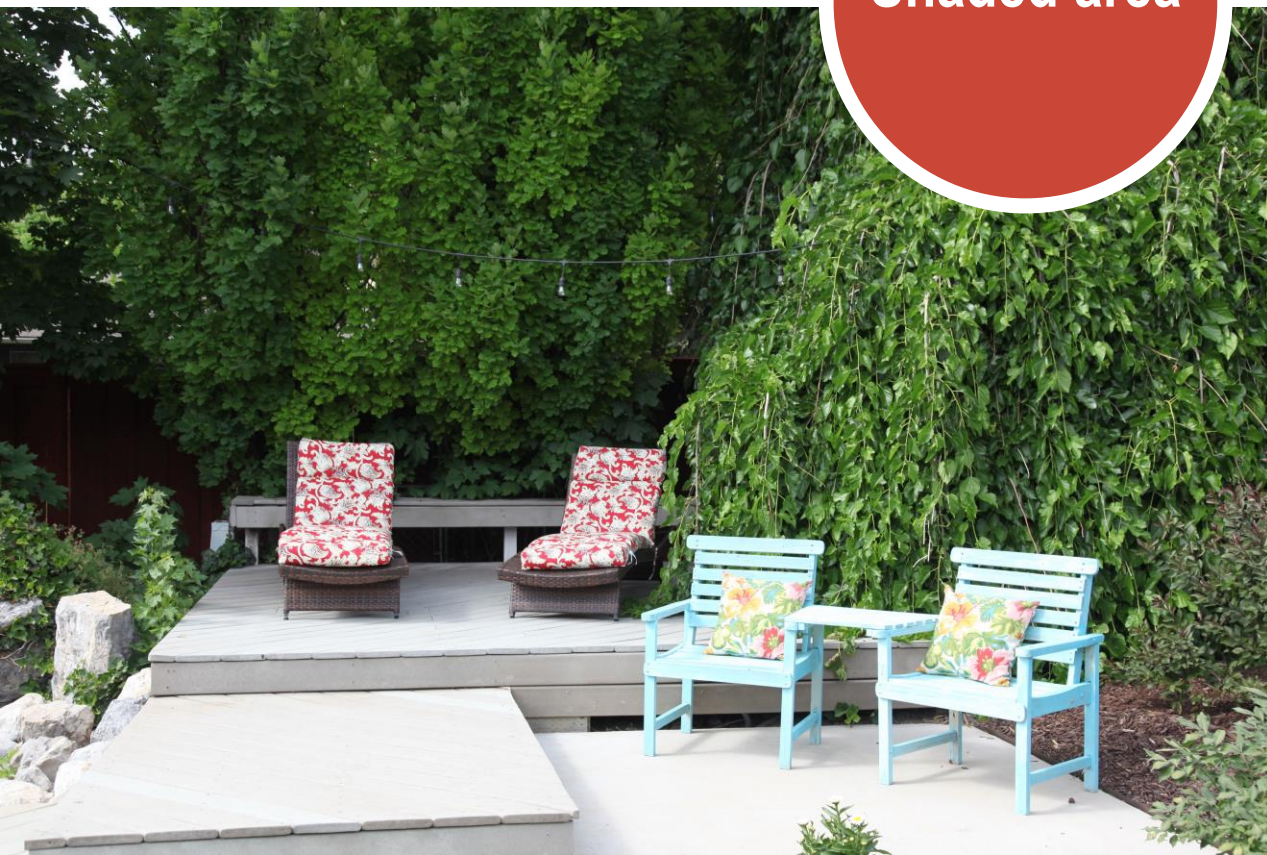
Low
use



Sun exposure



Shaded area



High sun exposure



Privacy



Seculsion



Openness



Connect with paths

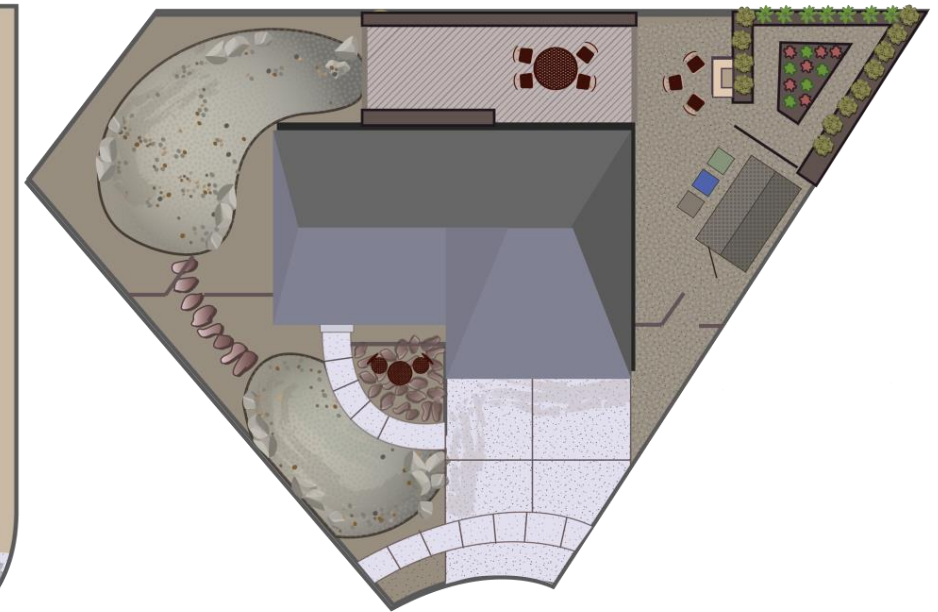
Rectangular lot



Corner lot



Odd-shaped lots



Connect with paths

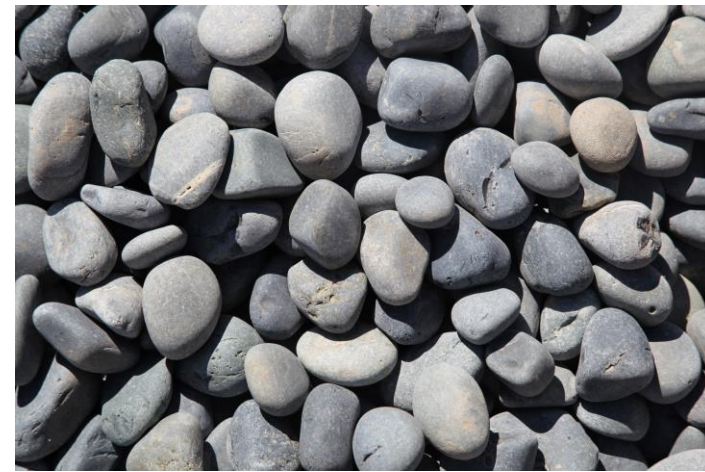
Be creative when you are planning your paths.

Making them larger means less space to maintain.



Hardscape materials

4 Paths



WORK TIME - 15 MINUTES



QUESTIONS:

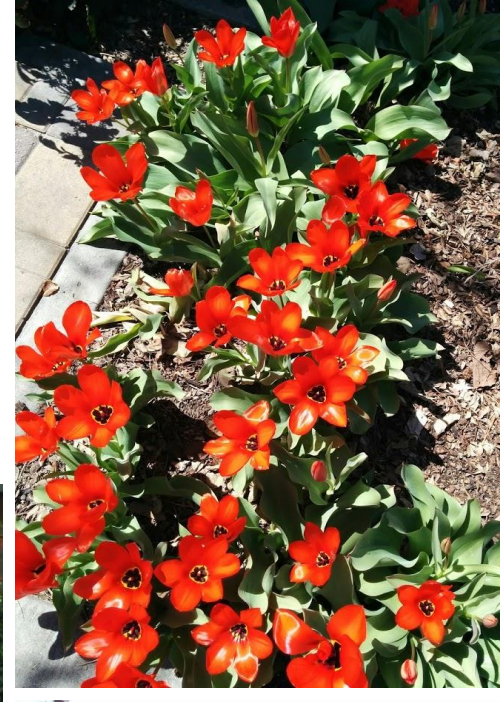
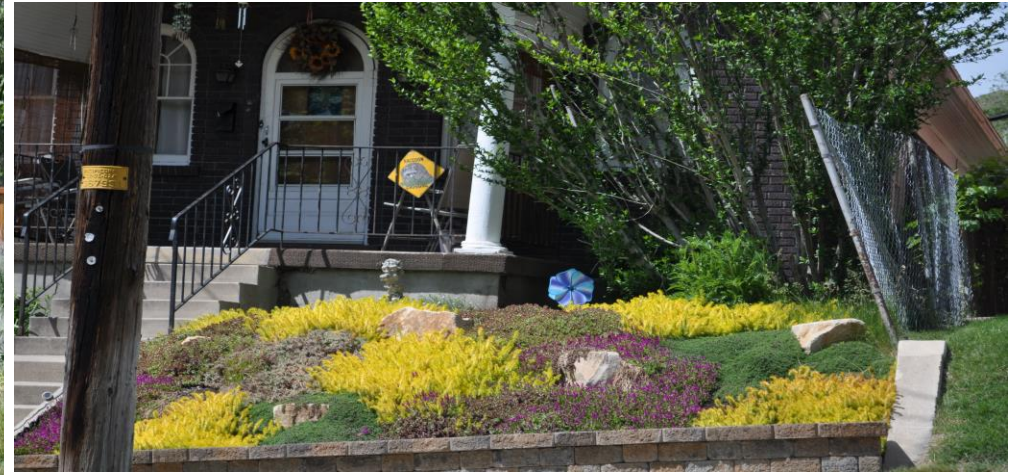
- What will I be using the spaces for?
- What times of day will they be utilized most?
- Where will they fit best in the landscape?
- Where do I need paths to connect the other elements?

INSTRUCTIONS:

- Draw shapes that represent your Gathering Areas, Activity Zones, and Paths



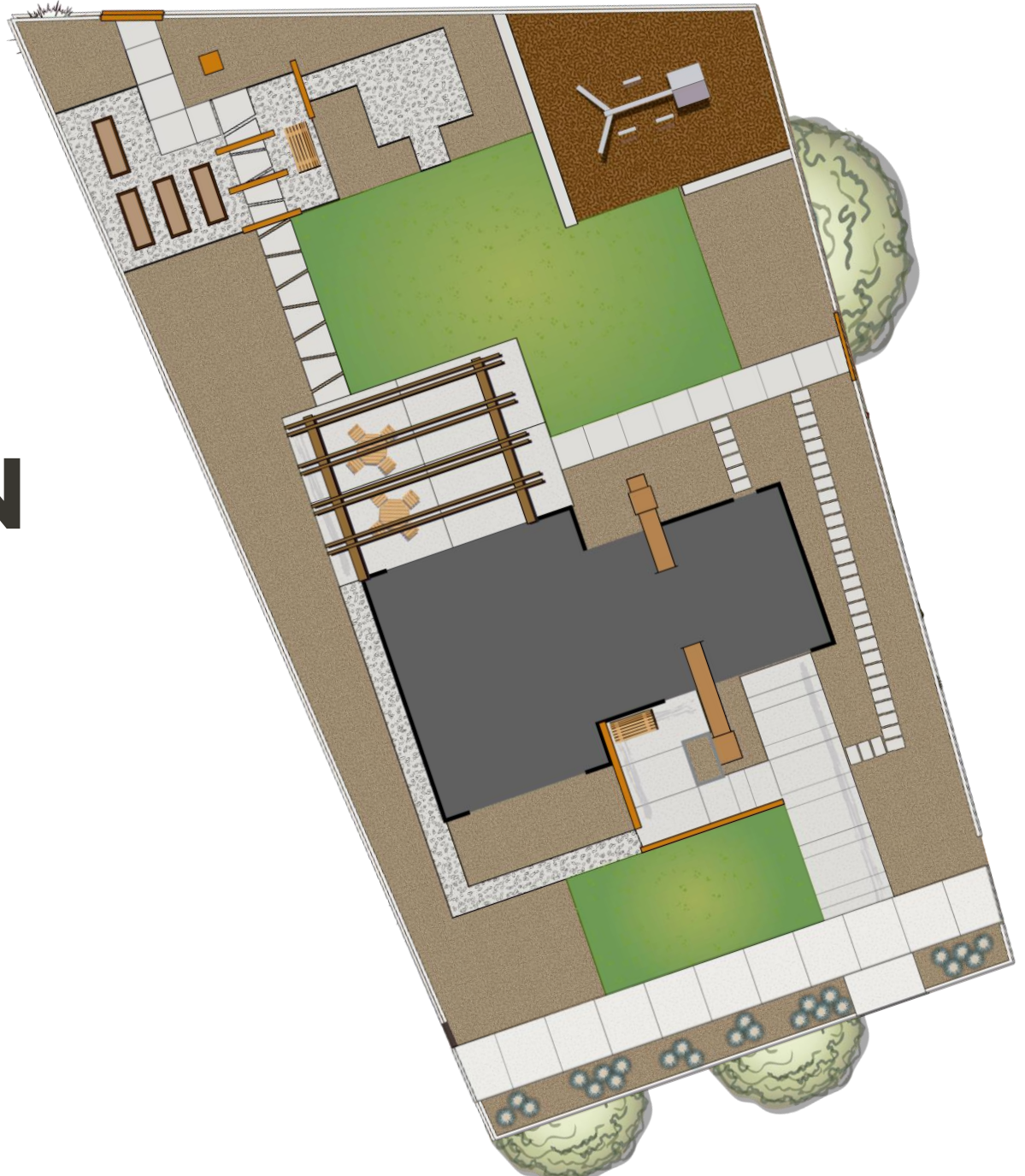
Gathering
Areas, Activity
Zones, & Paths



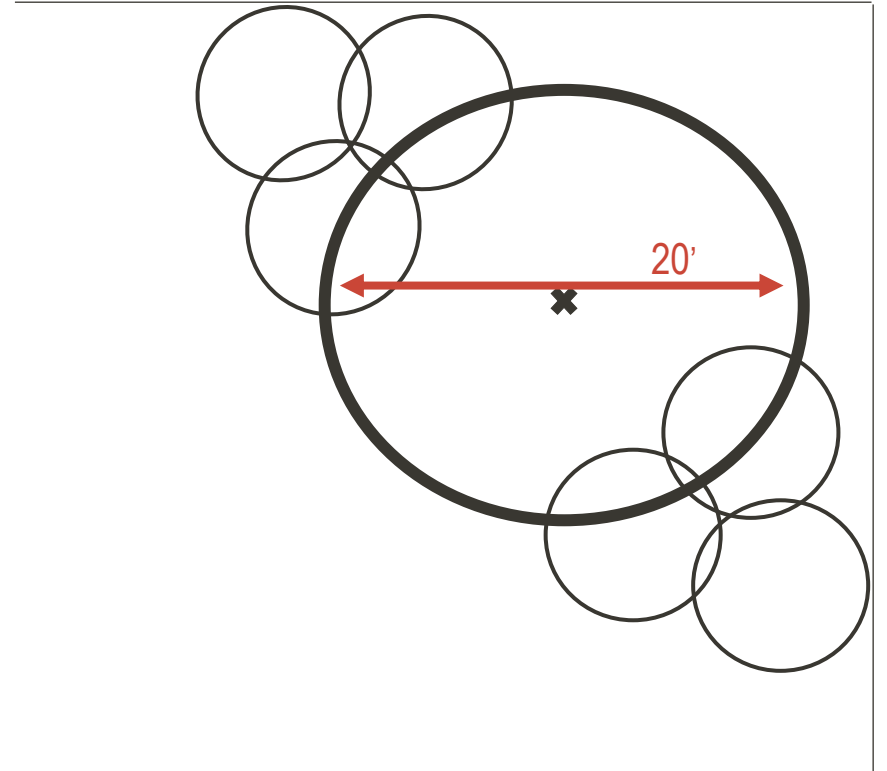
Planting Beds



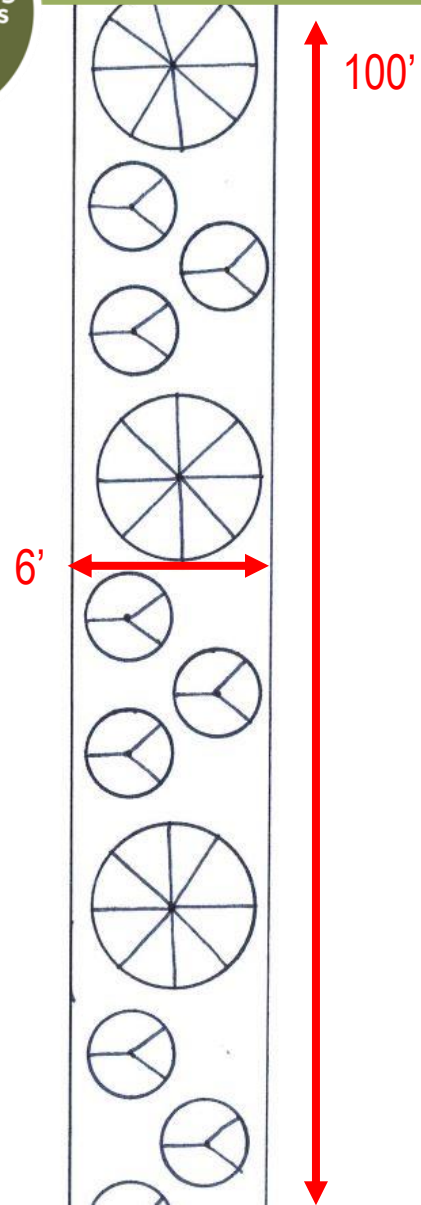
TREES
FOUNDATION
PERIMETER
INFILL
PARK STRIP



Design for mature size

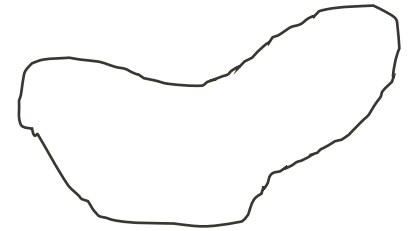
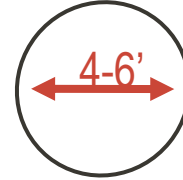
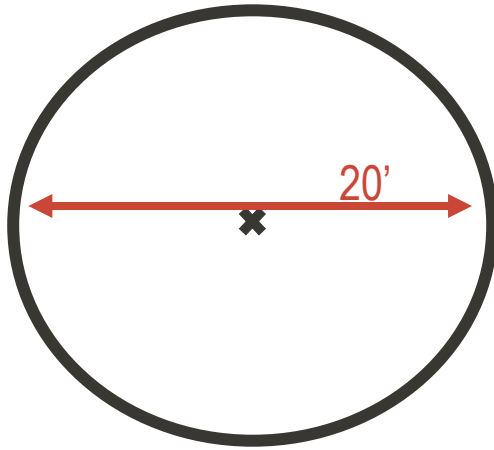


Design for mature size



Typical plant sizes

5
Planting
Beds

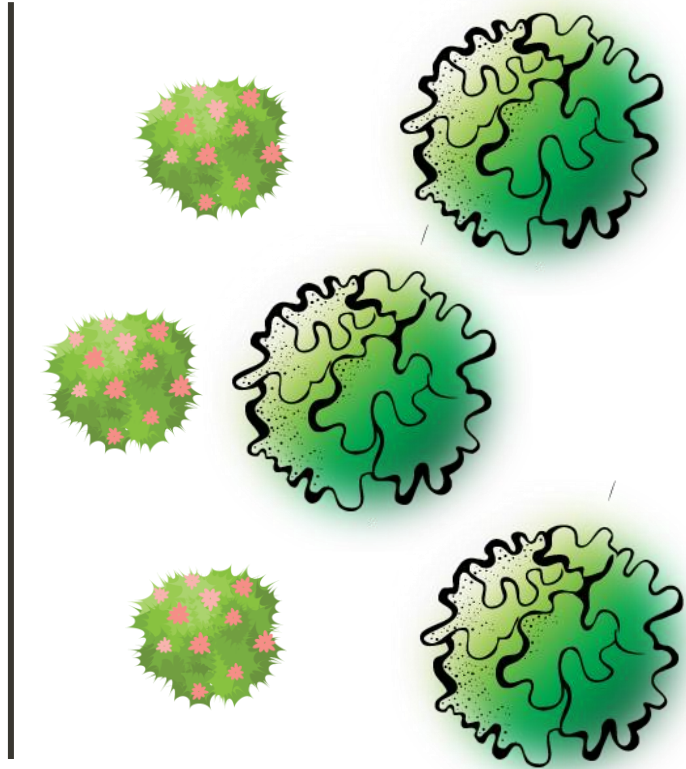


Planting in layers



Plant arrangement

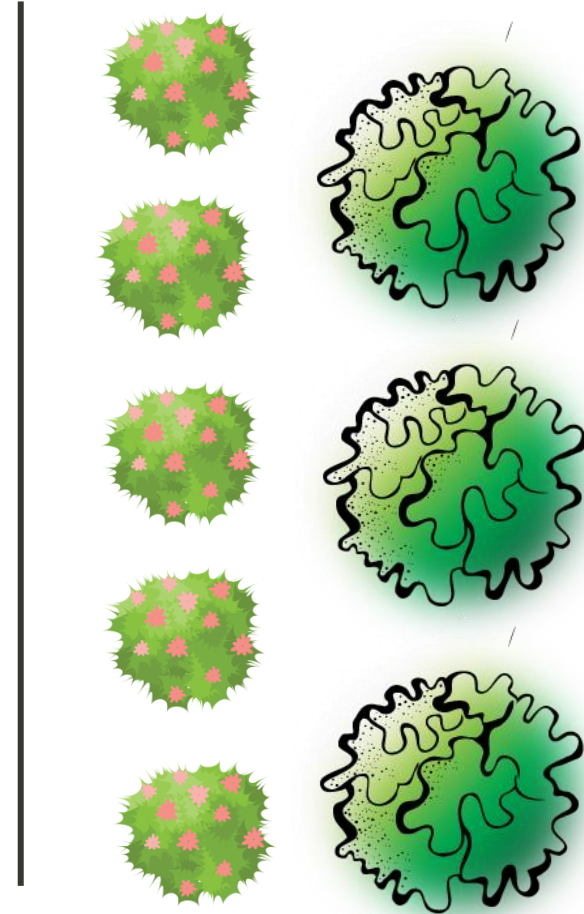
Informal Grouping



Plant arrangement



Formal Grouping



Planting design principles

1. Function

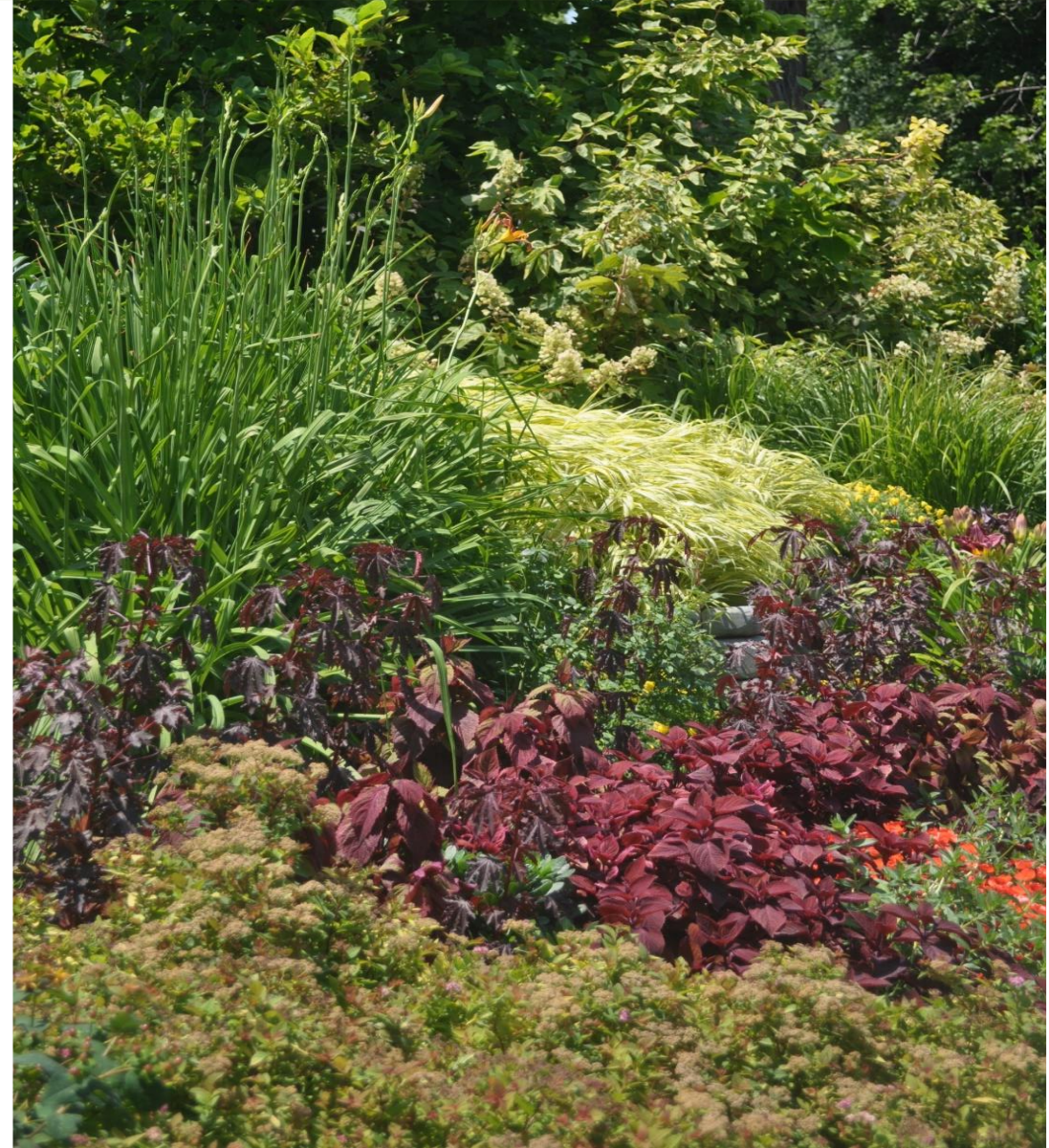
- What needs are we trying to fulfill with these plants?

2. Guideline

- What plant qualifications/ attributes do we want for each area?

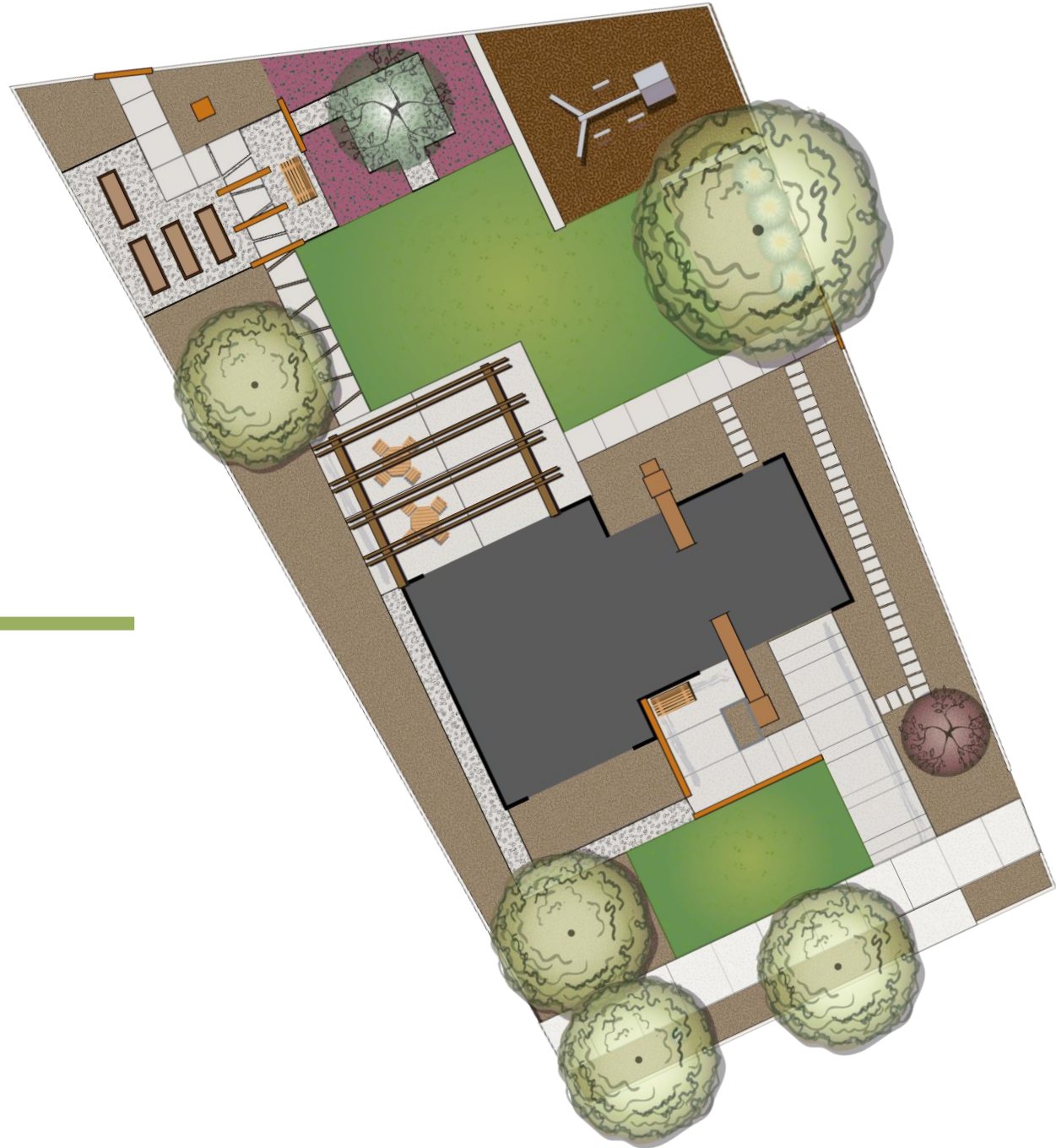
3. Arrangement

- What individual/group layout techniques do we want to apply?



TREES

- Design tree locations first
- Impact understory plants



Benefits of trees

- Shade
- Block unwanted views
- Multi-season interest
- Create micro-climate
- Passive solar
- Focal point



Shade

Place trees near multiple Gathering Areas or near Activity Zones where shade is desired.



Blocking unwanted views

- Upright growth habit.
- Evergreen for year-round benefit.
- Research the mature width of the plant and place them close enough that they will that there won't be space in between.

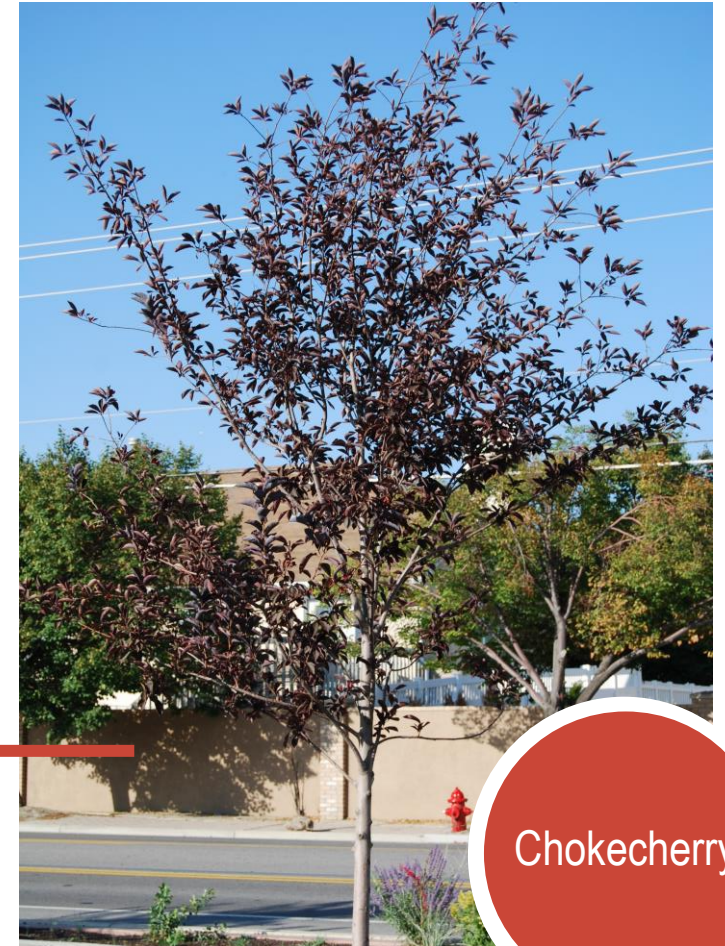
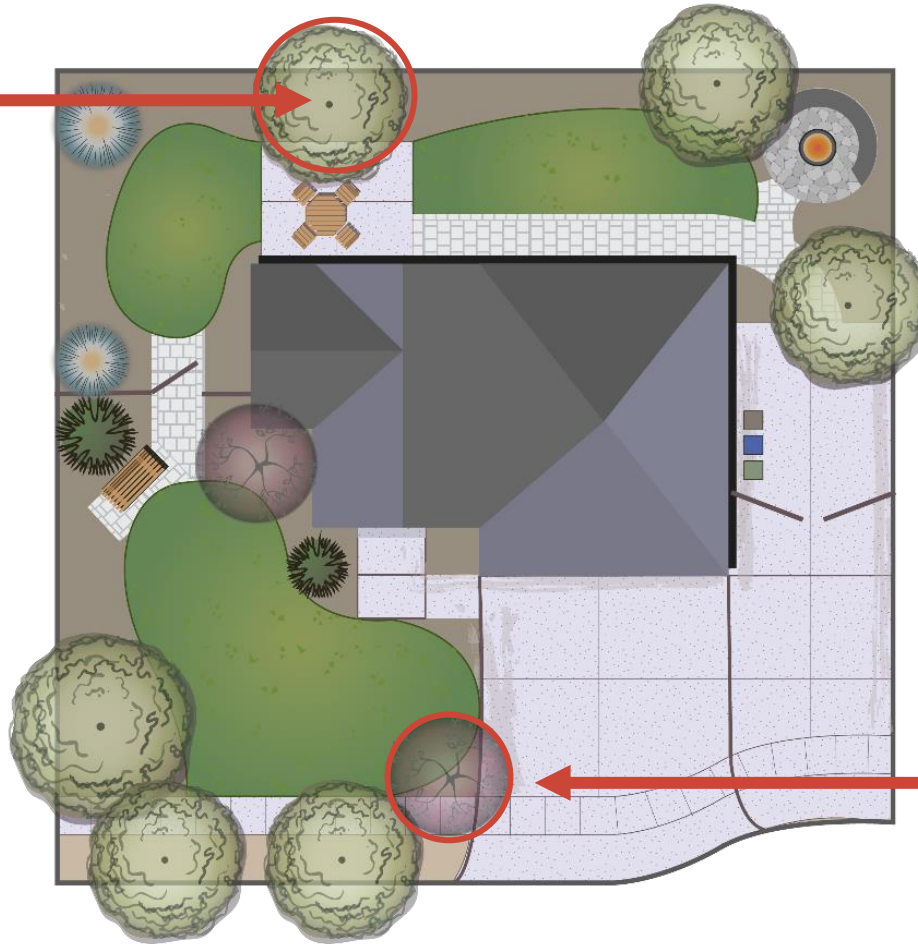


Multi-season interest

5 Planting Beds

Plant different flowering trees and trees with foliage color to provide season-long color and interest.

Crabapple



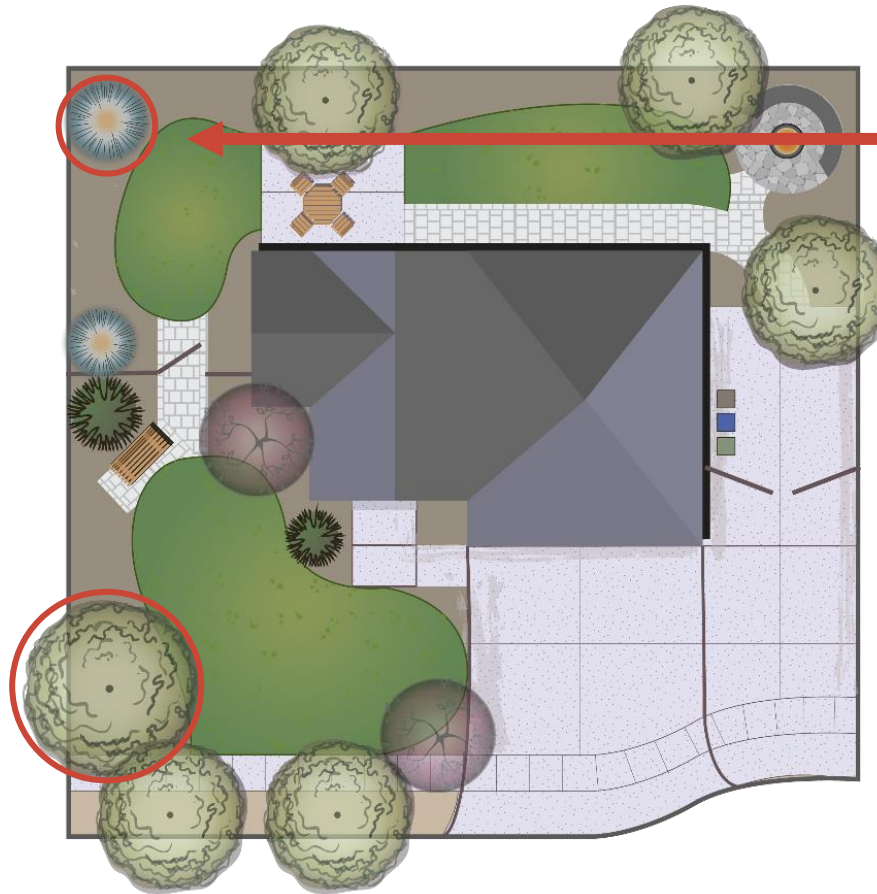
Chokecherry

Multi-season interest

Use evergreens and trees with fall color to create year-round interest

5 Planting Beds

Bald Cypress



Spruce

Creating micro-climates

Use trees to provide shade for lawn, gathering areas, and activity zones



Passive solar

When possible, locate shade trees on the west and south of home to provide summer cooling

Summer

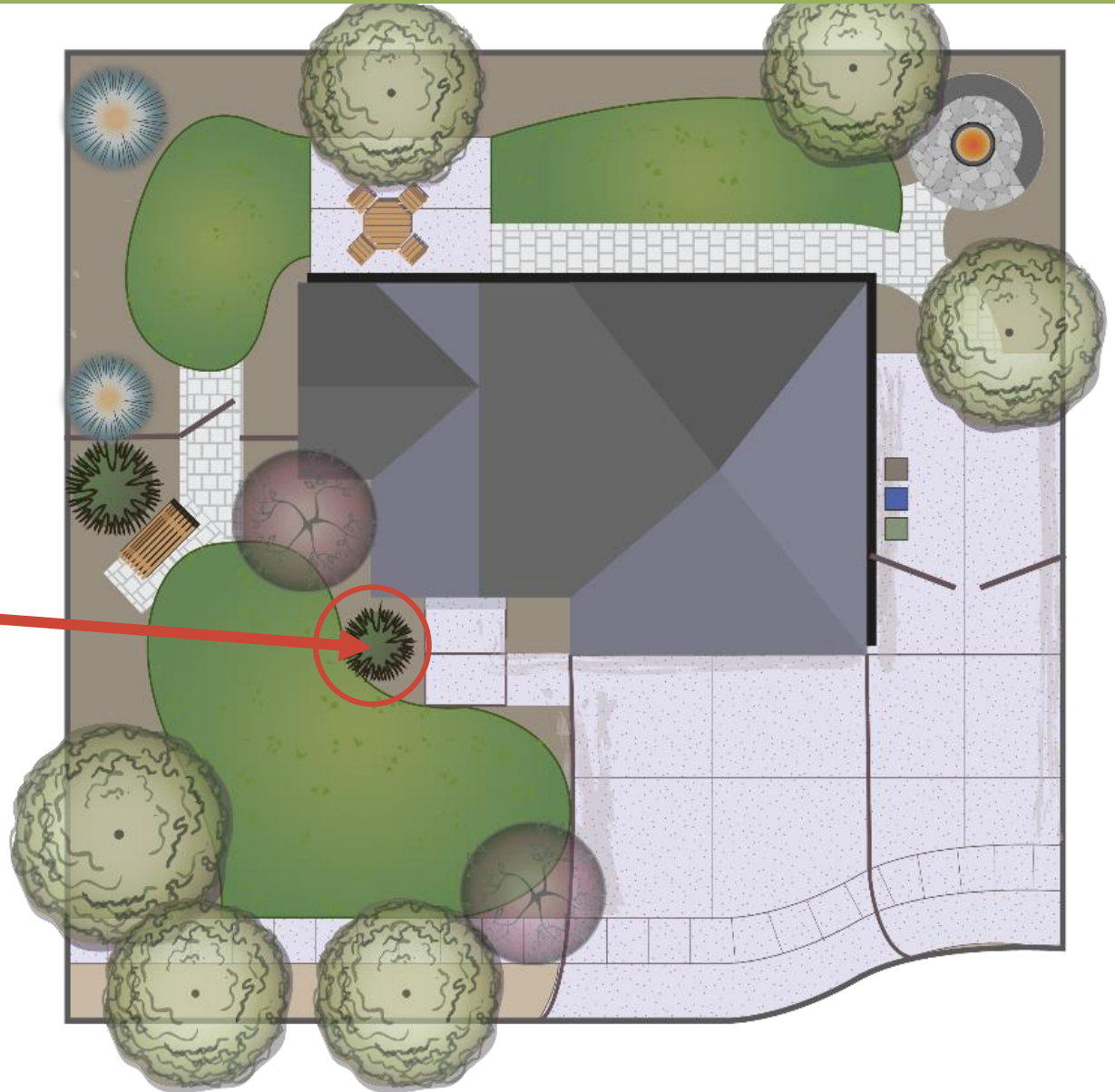


Winter



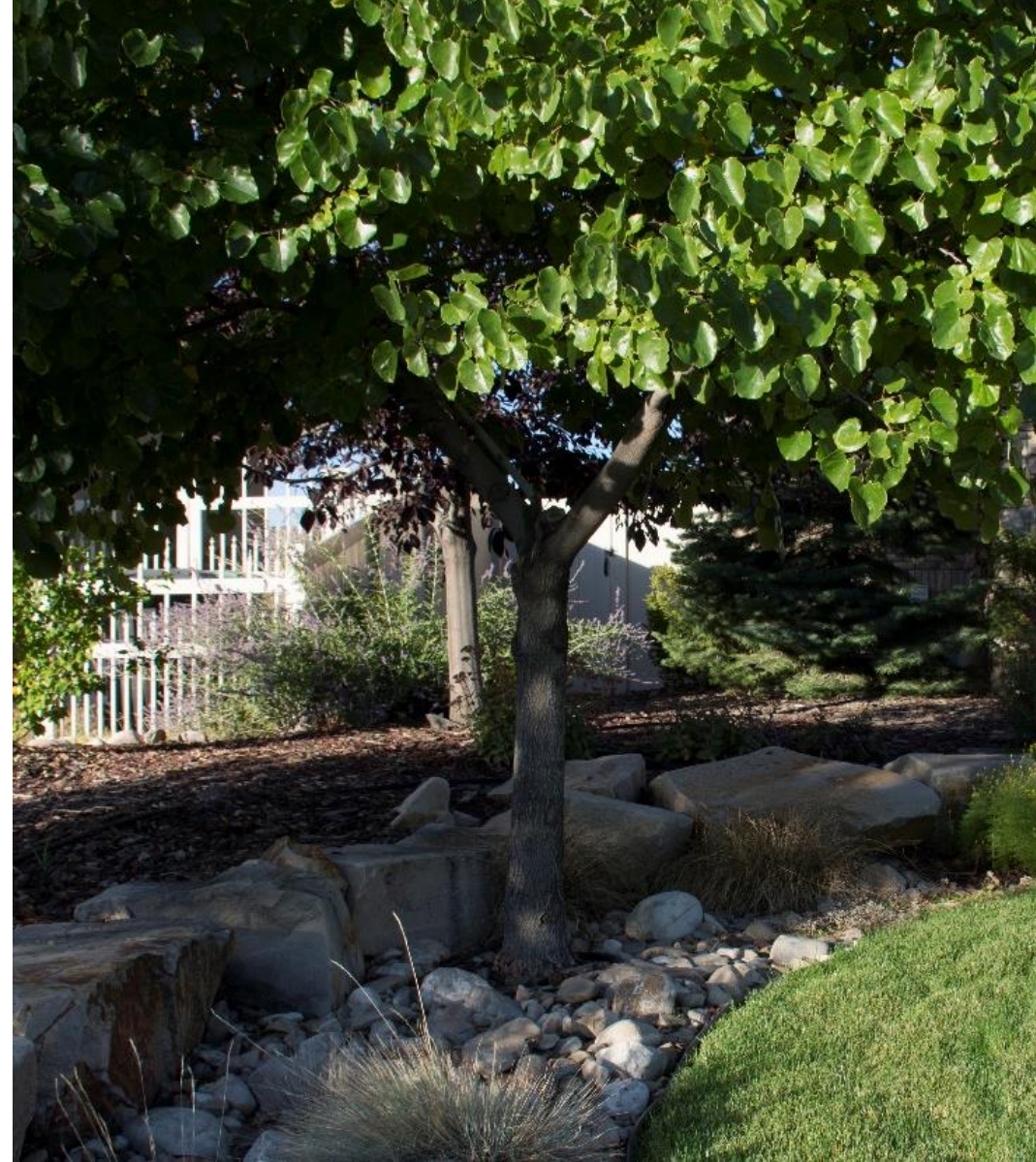
Creating focal point

Weeping White
Spruce



Tree guidelines

- Located outside of lawn
- At least 5-6' away from fence line
- Design next to Gathering Areas/Activity Zones
- Follow your city's ordinance for park strip trees



WORK TIME - 10 MINUTES



QUESTIONS:

- What benefit are the trees fulfilling?
- Where do you need interest?
- How will you arrange them?

INSTRUCTIONS:

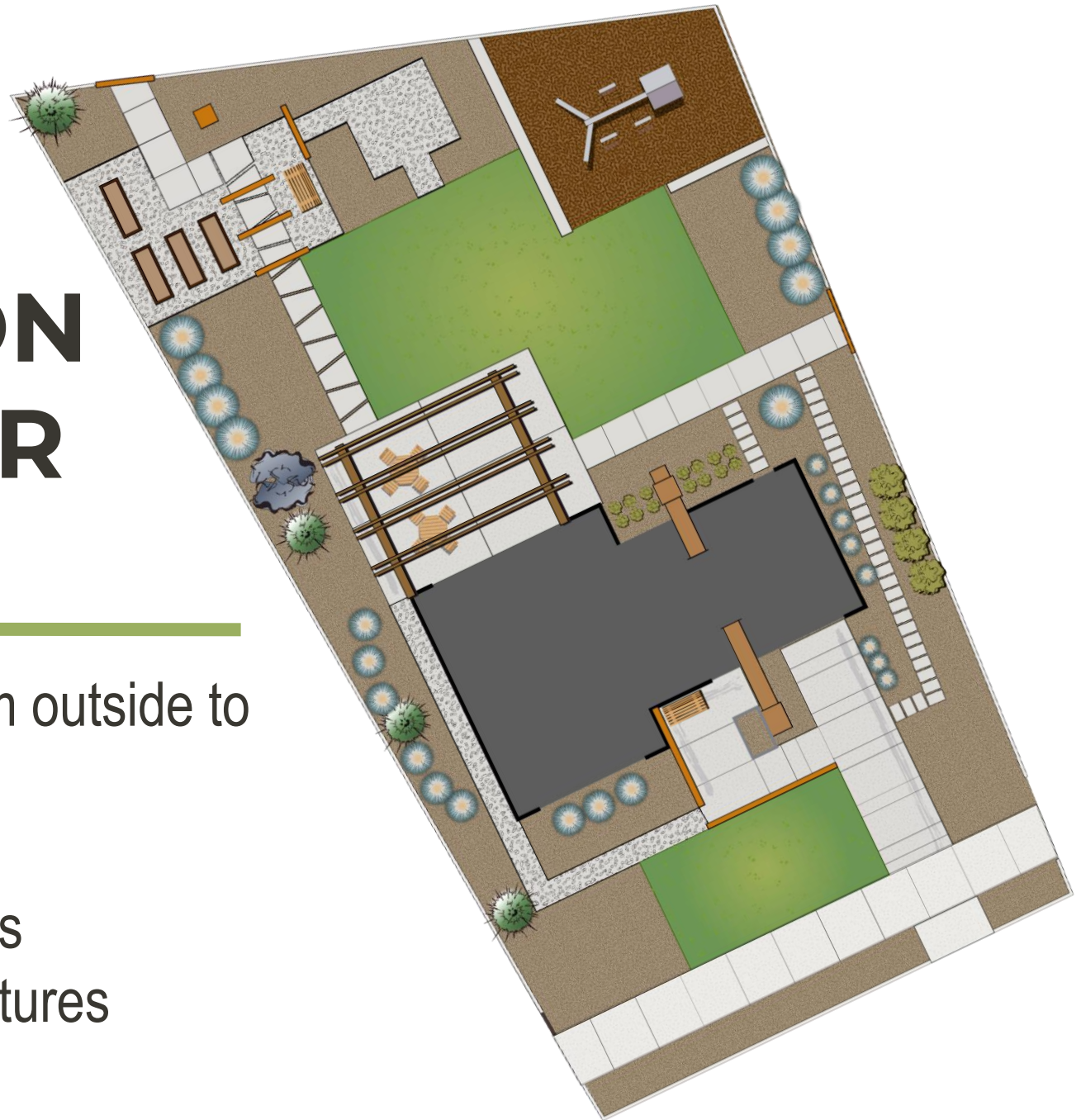
- Start with the perimeter of the landscape, apply trees there first. Then moving inward, place smaller trees where desired.
- Decide how to utilize existing shade from mature trees



TREES

FOUNDATION & PERIMETER PLANTS

- Soften the transition from outside to inside.
- Create boundaries
- Accent attractive features
- Conceal unattractive features



Benefits

5 Planting Beds

- Making a house more inviting
- Creates curb appeal
- Multi-season interest
- Creates structure
- Provides security



Frame windows and doors

- Accent window/door locations
- Do not block
- Add evergreens for year-round interest
- Create the feeling of an entrance



Create an entrance using plants

These evergreens give the feeling of an entrance without an actual door



Foundation Backbone

Use Foundation plants to provide structure and interest all year long



Perimeter Backbone & Seasonal

- Use diverse plant types to create interest
- Include evergreens
- Layer plantings for maximum privacy and beauty



Winter Interest

Conceal views

5
Planting
Beds

Use Foundation
and Perimeter
plants to conceal
undesirable
views



Now you see it

Define space

Trees, shrubs, & ornamental grasses can be used to add height, define space, and screen areas of the landscape



Foundation and Perimeter plant guidelines

- Shrubs, Ornamental Grasses, and tall perennials
- Perennials should be at least 3' tall
- Dwarf trees that don't exceed 15' can be used against foundation



Plant arrangement

- Repeat similar plant colors
- Design with foliage color rather than flower color
- Group lines in odd numbers
- Use shorter shrubs by windows



WORK TIME - 10 MINUTES



QUESTIONS:

- Where do you need year-round interest?
- Where do you need to add foliage color?
- How will you arrange them?

INSTRUCTIONS:

- Start by placing taller shrubs closest to the house
- Frame windows
- Place shorter plants below windows



Foundation
& Perimeter
Plants

INFILL PLANTS

- Low growing plants
- Front of the planting bed
- Along edges, such as paths



Infill plant arrangement

- Echo similar plant colors
- Design with foliage color and flower color
- Group plants in odd numbers
- Use contrasting textures and colors
- Plant from shortest to tallest
- Impulse purchases





WORK TIME - 5 MINUTES

QUESTIONS:

- Where do you need bursts of color?
- Where can you use seasonal interest?
- How will you arrange them?

INSTRUCTIONS:

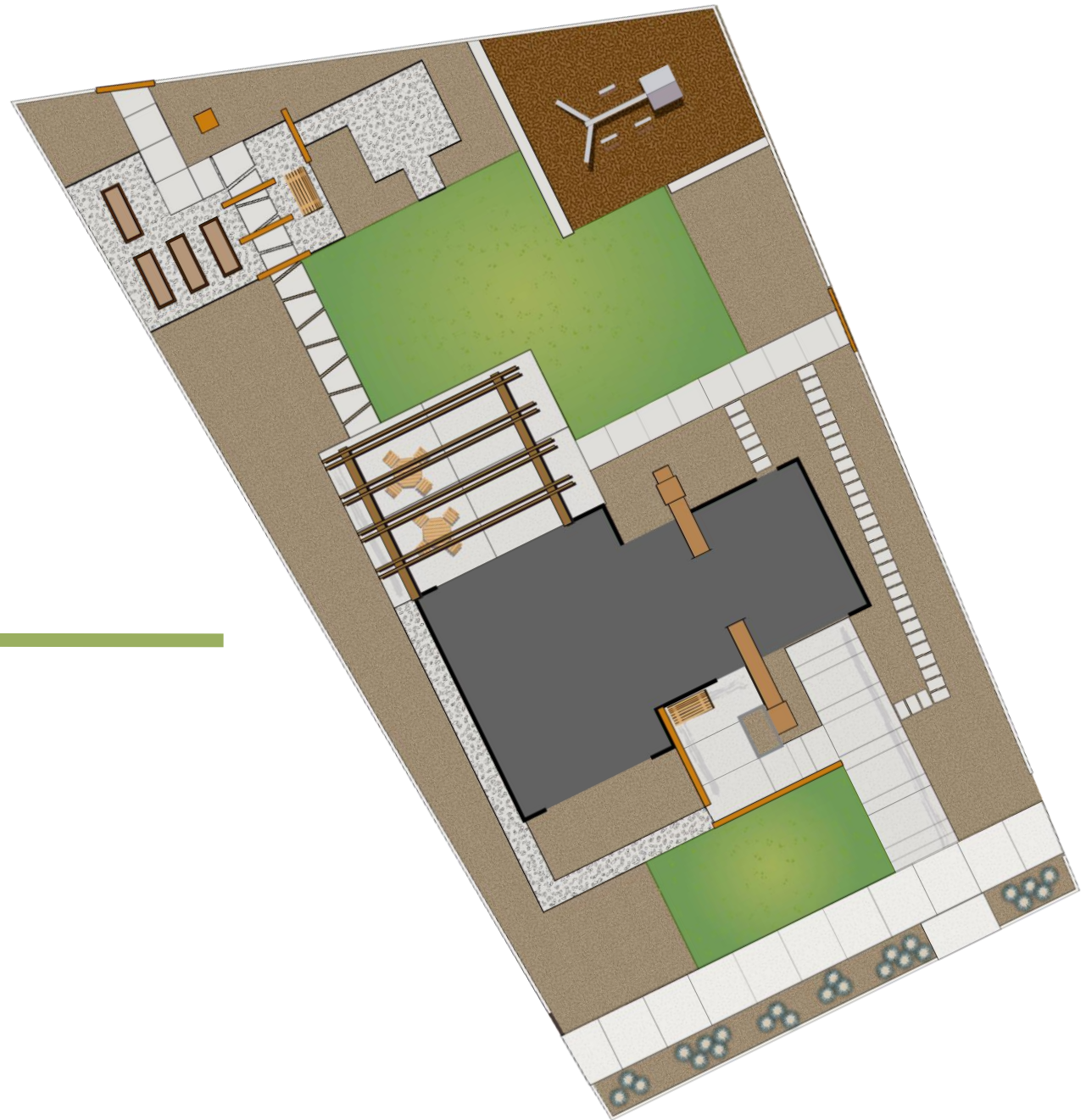
- Apply circles in odd-numbered arrangements.
- Fill in all the space between the fence line and the foundation of the house.



Infill Plants

PARK STRIP PLANTS

- Low growing plants
- Salt tolerant
- Heat & drought tolerant



Park strip plants

- Waterwise replacement for lawn
- Adds to curb appeal
- Visually unifies the park strip with the rest of the landscape



Park strip plants guidelines

- Park Strip Plants include:
 - Shrubs, Ornamental Grasses, Perennials, Bulbs, and Groundcovers that stay less than 24” tall
 - Trees can be used in park strips as the city ordinance allows for it
- Plants should be salt tolerant
- Plants need to be hardy and tough



WORK TIME - 5 MINUTES



QUESTIONS:

- Where do you need bursts of color?
- Would a path be beneficial?

INSTRUCTIONS:

- Apply circles in odd-numbered arrangements.
- Find a pattern that fits best and repeat it along the park strip.



Park Strip
Plants