



**SPRING
PERENNIALS**



PERENNIALS

- Come back year after year.
- Typically die back in the fall/winter.
- Come in a variety of colors and textures
- Typically use much less water than annuals and lawn

ANNUALS

- Do NOT come back year to year
- Most will die back once fall comes. Some annuals are more cold hardy. EX: Pansies and Ornamental cabbage
- Typically need watering at least every other day in the ground
- Do very well in containers

BIENNUALS

- Flower every other year
- Die back for fall/winter
- Will return in spring with either only foliage or foliage and flowers.



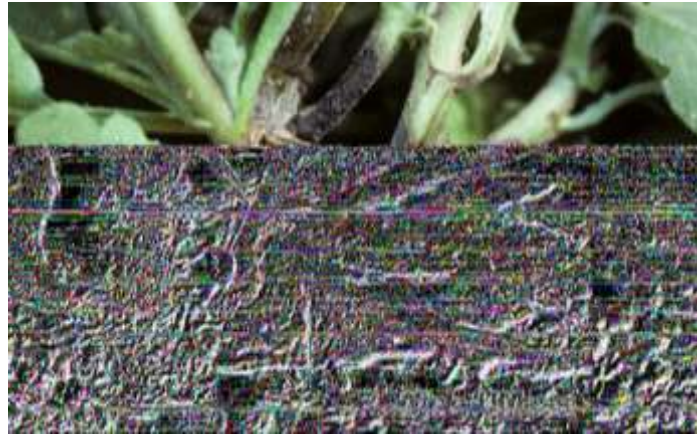


PICKING PERFECT PERENNIALS

- Coordinate plants to compliment each other
- Check for insects
- Figure out your USDA hardiness Zone
- Read the plant tags
- Stagger bloom times



CHECK FOR INSECTS OR DISEASES



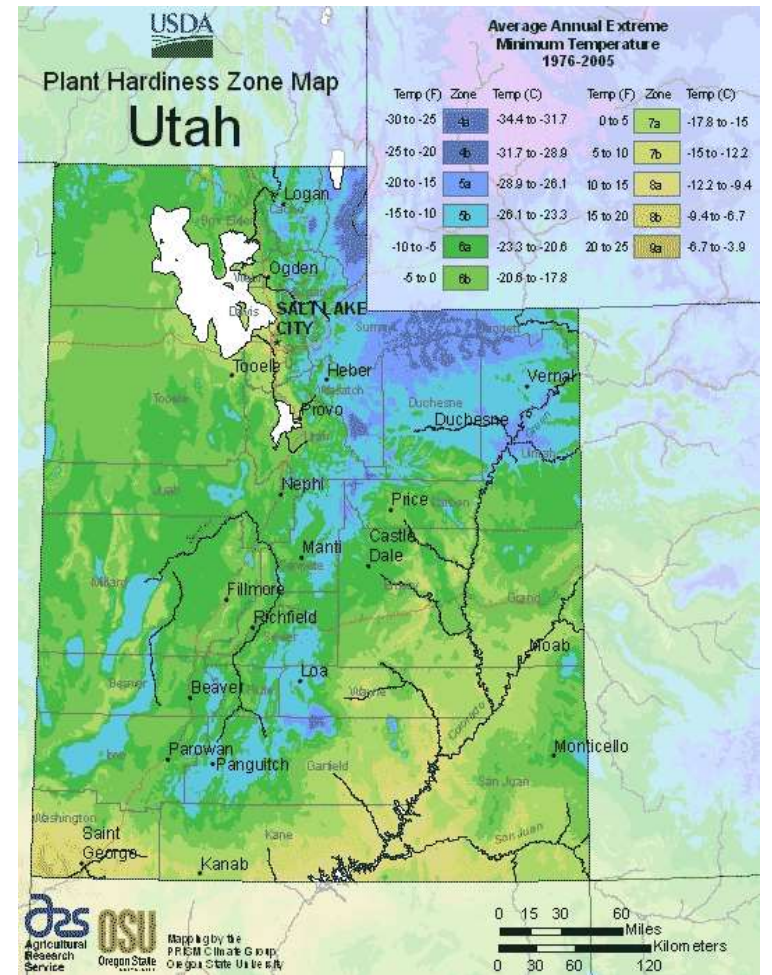
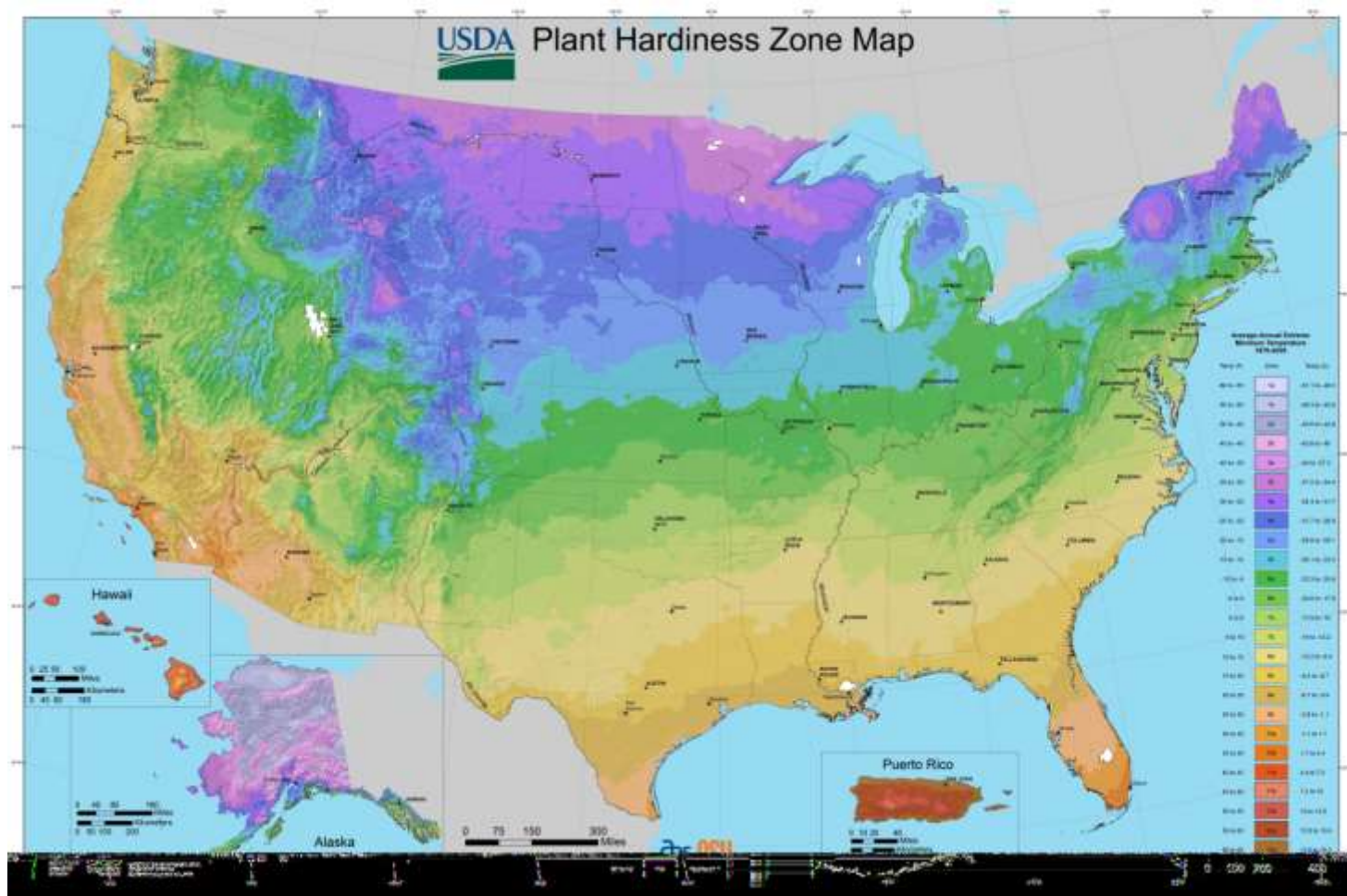



FIGURE OUT YOUR HARDINESS ZONE

READ THE PLANT TAGS

PW
PROVEN
WINNERS®
DOLCE®
'BLACKBERRY ICE'



SUN shade 10-12"

Perennial
Heuchera hybrid



Download FREE app for more
planting ideas or information at
www.provenwinners.com

10-12"
SUN shade

PW
PROVEN
WINNERS®
DOLCE® 'Blackberry Ice'
Coral Bells

FEATURES: Prized for its iridescent purple leaves with a soft, luminous, pastel overlay. Forms a full, rounded mound of foliage topped by vibrant purple spikes and cream flowers. Resistant to deer and rabbits. Color changes over the season from pale to deep purple.

CARE: Full sun to part shade. Well-drained soil is required. Self-seeds.

PAIR WITH: Ligularia, Spenthecia, Heuchera, Ferns, Bleeding Hearts, Hardy Geraniums, Violets, Scilla, Fungus, Anemone

ENJOY this perennial
YEAR AFTER YEAR.

PURPLE FOUNTAIN GRASS
Pennisetum xadvena
'Rubrum'



10-12"

PURPLE FOUNTAIN GRASS

A rapid grower and prolific bloomer, with rich burgundy foliage and foxtail-like flowers.

- Sun to part shade
- Moist
- Well-draining soil
- 3-5'
- Hardiness Zones 9-11

Printed in Canada
"horticola"

10-12"

Full Sun
PERENNIAL

'Pretty in Pink'
FASHIONISTA™
Collection
Perennial Salvia



Salvia

0109271566

Unauthorized Propagation Prohibited

Salvia
'Pretty in Pink'

- height: 18-20" (45-50cm)
- space: 20-22" (50-55cm)
- light: More than 6 hours of daily sun
- zone: 3-8
- blooms: Late Spring to Early Summer
- pair with: Yarrow, Shasta Daisy, Lavender

features

- Vibrant lavender pink flowers
- Darker pink calyxes
- Blooms for many weeks

care

- Easy to grow in full sun
- Drought tolerant but prefers moisture
- Cut back after flowering to promote rebloom

Get inspired at:
www.PerennialResource.com
This perennial will beautify your garden year after year.



SPRING



FALL



SPRING



SPRING



SUMMER



SUMMER

STAGGER BLOOM TIMES



Spring Blooming
Perennials
(March-June)



'Russell'



Lupinus Lupine

- Zone: 4-8
- Height: 3-4'
- Spread: 1-1.5'
- Bloom time: Early to Late Spring
- Bloom: White, pink, red, yellow, blue, purple, bicolor
- Sun: Full sun
- Water: Medium



'Arroyo'



'Gallery Blue Bicolor'



'Sarah Berhardt'



Itoh 'Ba

Paeonia
PEONY

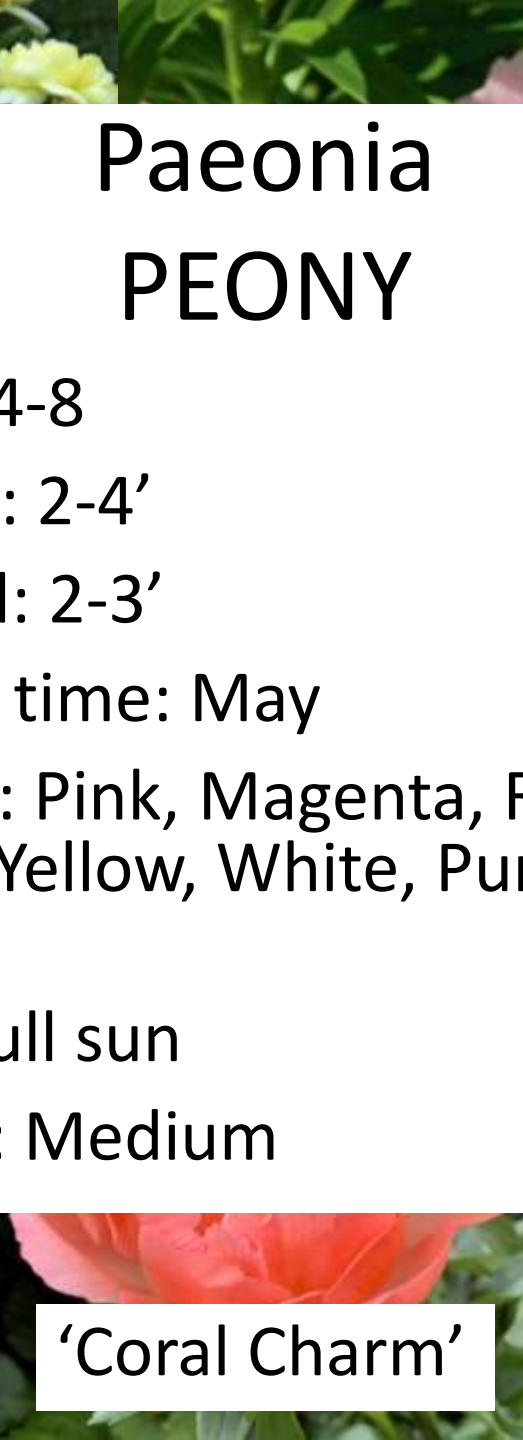
- Zone: 4-8
- Height: 2-4'
- Spread: 2-3'
- Bloom time: May
- Bloom: Pink, Magenta, Red, Coral, Yellow, White, Purple, Mix
- Sun: Full sun
- Water: Medium



Itoh 'Cora Louise'



'Festiva Maxima'



'Coral Charm'



'Red Charm'



ndae'



'Red Lark'



'Blue Butterfly'

Delphinium LARKSPUR

- Zone: 3-7
- Height: 1.5-5'
- Spread: 1-3'
- Bloom time: May to June
- Bloom: Shades of blue and white
- Sun: Full sun to part shade
- Water: Medium



'Sky Blue'



'Guardian Blue'



'White Guardian'



'Dark blue and White'

Digitalis purpurea

FOXGLOVE

- Zone: 4-8
- Height: 2-5'
- Spread: 1-2.5'
- Bloom time: May to June
- Bloom: Pastel shades of red, cream, purple, pink, yellow, and white
- Sun: Full sun to part shade
- Water: Medium





'Husker Red'



Penstemon Beardtongue

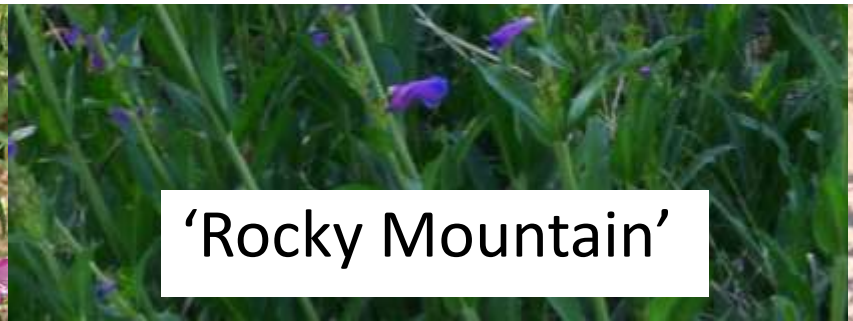
- Zone: 3-9
- Height: 1.5-4'
- Spread: 1.5-3'
- Bloom time: Mid Spring-Mid summer
- Bloom: Red, Yellow, Pink, Purple, Blue
- Sun: Full sun
- Water: Dry to medium



'Mersea Yellow'



'Red Rocks'



'Rocky Mountain'



eatonii



Aurinia saxatilis Basket-of-Gold

- Zone: 3-9
- Height: 6"-1'
- Spread: 1-2'
- Bloom time: April to June
- Bloom: Yellow
- Sun: Full sun
- Water: Dry

Linum lewisii

WESTEN BLUE FLAX

- Zone: 3-9
- Height: 1.5-2.5'
- Spread: 1.5'
- Bloom time: March to June
- Bloom: Blue
- Sun: Full sun
- Water: Dry to medium





Hymenoxys SUNDANCER DAISY

- Zone: 5-10
- Height: 1.5'
- Spread: 1.5'
- Bloom time: April to Sept.
- Bloom: Yellow
- Sun: Full sun
- Water: Dry to medium
- 800-803-2523

Nepeta CATMINT

- Zone: 4-8
- Height: 1-2.5'
- Spread: 1-3'
- Bloom time: April to Sept.
- Bloom: Light purple
- Sun: Full sun to part shade
- Water: Dry to medium





Helleboris orientalis

Hellebore

- Zone: 4-9
- Height: 1-1.5'
- Spread: 1-1.5'
- Bloom time: April
- Bloom: White to pink to rose-purple with yellow stamens
- Sun: Full sun
- Water: Dry to medium



SHADE GARDENS



Athyrium 'Ghost' Fern



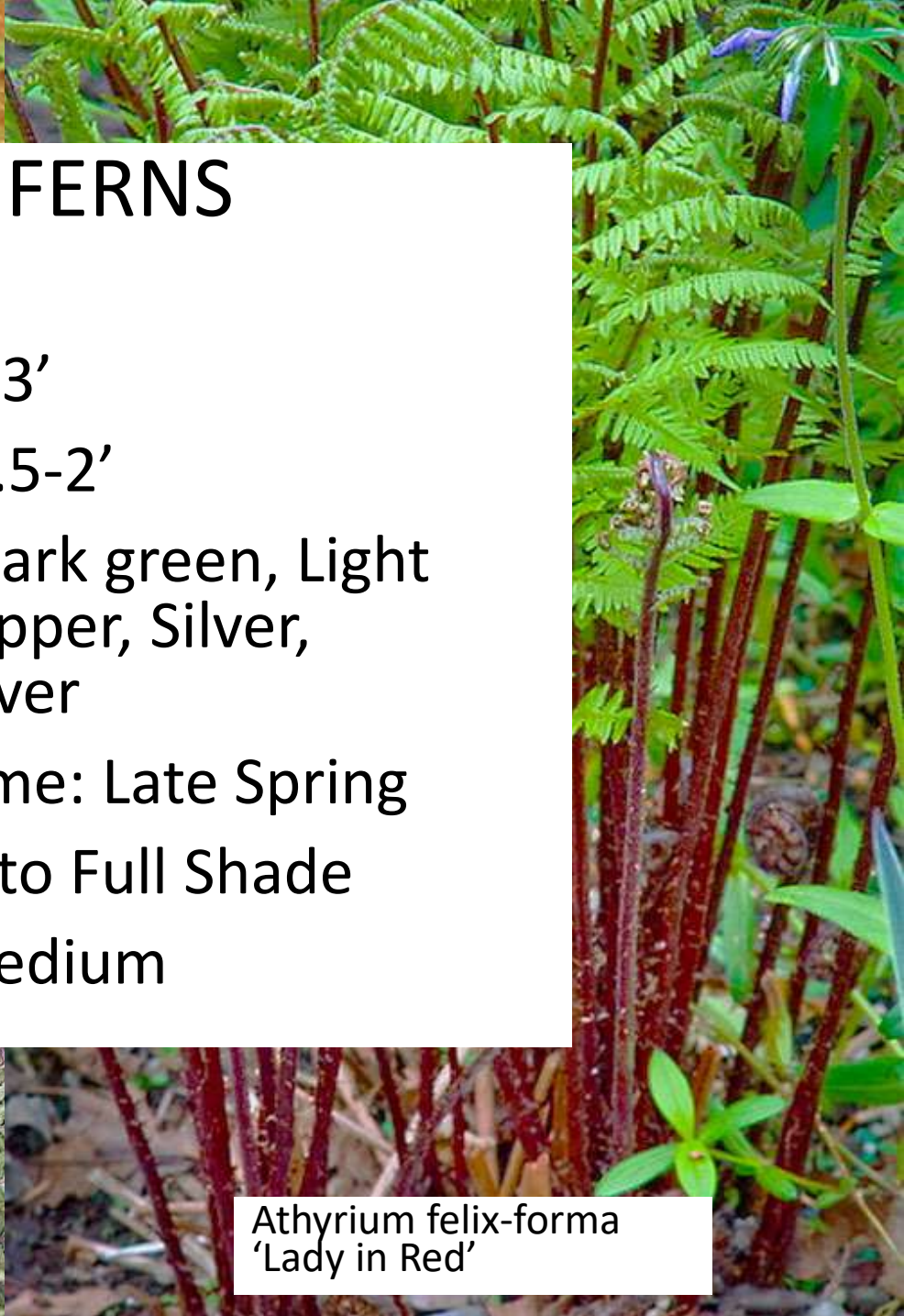
Dryopteris 'Autumn Br'



Dryopteris filix-mas



Athyrium nipponicum 'Pictum'



Athyrium felix-forma 'Lady in Red'

FERNS

- Zone: 3-8
- Height: 1-3'
- Spread: 1.5-2'
- Foliage: Dark green, Light green, Copper, Silver, Purple/silver
- Foliage time: Late Spring
- Sun: Part to Full Shade
- Water: Medium

'Alba'



Dicentra spectabilis

BLEEDING HEART

- Zone: 3-9
- Height: 2-3'
- Spread: 1.5-3'
- Bloom time: April to May
- Bloom: Pink, White, Red
- Sun: Part shade-Full Shade
- Water: Medium



Species



'Valentine'



'Gold Heart'

'Origami Mix'

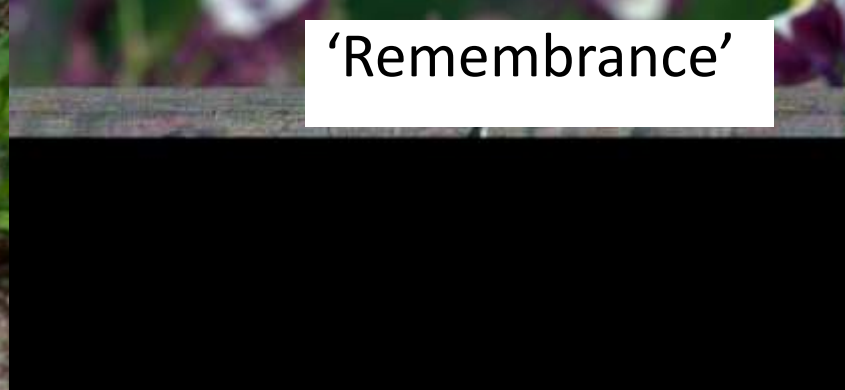


Columbine Aquilegia

- Zone: 3-9
- Height: 1-3'
- Spread: 1-2'
- Bloom time: April to May
- Bloom: Pink, white, purple, blue, red, yellow, mix
- Sun: Part shade to full sun
- Water: Medium



'Ermeier Pink'



'Remembrance'



'Denver Gold'



'Blue and White'



'Little Lanterns'



'Jack Frost'

Brunnera macrophylla BUGLOSS

- Zone: 3-8
- Height: 1-1.5'
- Spread: 1-1.5'
- Bloom time: April to May
- Bloom: Blue
- Sun: Part shade
- Water: Medium



'Langtrees'



'Queen of Hearts'

'June'



'Big Daddy'

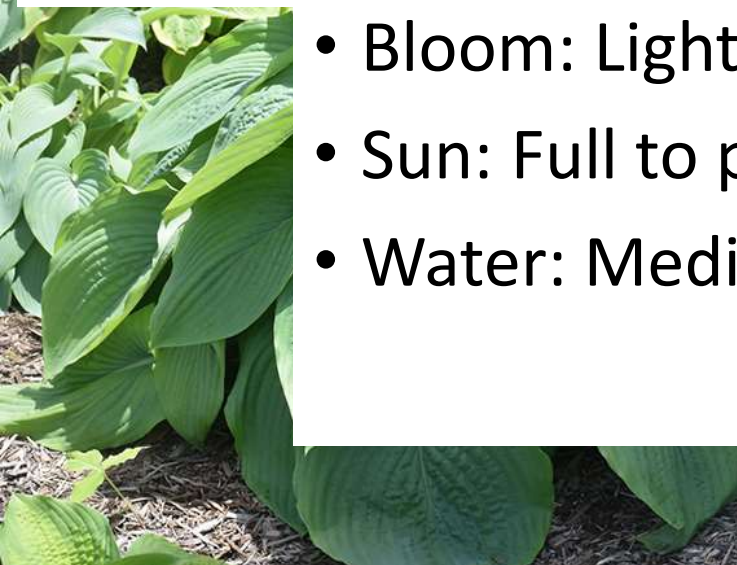


Hosta

HOSTA

- Zone: 3-8
- Height: 1-5'
- Spread: 1-6'
- Bloom time: July to August
- Bloom: Light purple or white
- Sun: Full to part shade
- Water: Medium

'Empress'



'Patriot'



Heuchera

CORAL BELLS

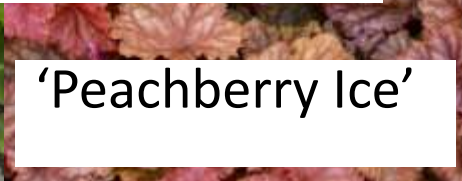
- Zone: 4-9
- Height: 1-2'
- Spread: 1-1.5'
- Bloom time: June to July
- Bloom: Cream, pink, coral, red
- Foliage: Purple, Red, Green, Yellow, Dark Purple, Orange, Mixture
- Sun: Part shade to part sun
- Water: Medium



'Apple Twist'



'Lime marmalade'



'Peachberry Ice'



'Obsidian'



'Forever Red'



'Spearmint'



Dolce 'Wildberry'



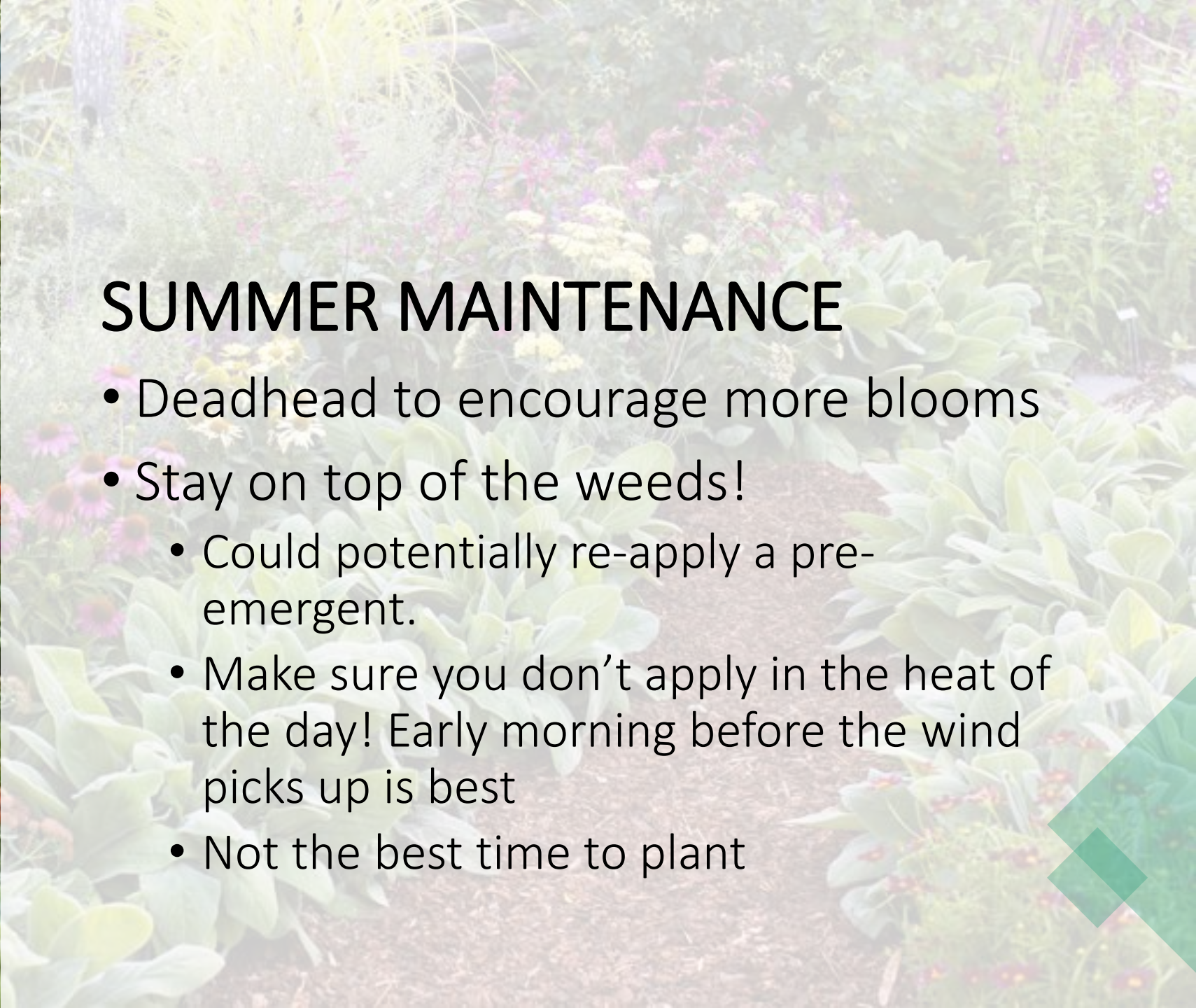
SPRING MAINTENANCE

- Fertilizing is a good idea
- Spring cleanup
- Stay on top of the weeds!
 - Applying pre-emergent may help
 - Watering with drip will help prevent weed growth
- 2nd best time to plant
- Make sure your irrigation is working



SUMMER MAINTENANCE

- Deadhead to encourage more blooms
- Stay on top of the weeds!
 - Could potentially re-apply a pre-emergent.
 - Make sure you don't apply in the heat of the day! Early morning before the wind picks up is best
 - Not the best time to plant





FALL MAINTENANCE

- Cut back and clean up plants as they die back to the ground
 - A few exceptions
- Stay on top of the weeds!

